

Education and Cultural Affairs
Subcommittee Tuesday, June 27, 2023

Contents

AGENDA 2

MINUTES 4

AGENCY SNAPSHOT 8

AGENCY PRESENTATION11



AGENDA



South Carolina House of Representatives Legislative Oversight Committee

EDUCATION AND CULTURAL AFFAIRS SUBCOMMITTEE

Chairman Timothy A. "Tim" McGinnis

The Honorable Adam M. Morgan
The Honorable John R. McCravy, III
The Honorable Wendell K. Jones
The Honorable Josiah Magnuson

A G E N D A

Tuesday, June 27, 2023
10:30 a.m.
Room 110 - Blatt Building

Pursuant to Committee Rule 4.7, S.C. ETV shall be allowed access for internet streaming whenever technologically feasible.

AGENDA

- I. Approval of Minutes
- II. Discussion of the study of the Commission on Higher Education
- III. Adjournment



MINUTES



South Carolina House of Representatives Legislative Oversight Committee

Chair Jeffrey E. “Jeff” Johnson

William H. Bailey
Gary S. Brewer
April Cromer
Kambrell H. Garvin
Leon Douglas “Doug” Gilliam
Thomas Duval “Val” Guest, Jr.

William M. “Bill” Hixon
Joseph H. “Joe” Jefferson, Jr.
Wendell Keith Jones
Roger K. Kirby
Josiah Magnuson
John R. McCravy, III

First Vice-Chair Chris Wooten

Timothy A. “Tim” McGinnis
Adam M. Morgan
Travis A. Moore
Russell L. Ott
Marvin R. Pendarvis
Marvin “Mark” Smith

Lewis Carter
Director

Cathy A. Greer
Administration Coordinator

Roland Franklin
Legal Counsel

Riley E. McCullough
Research Analyst

Post Office Box 11867
Columbia, South Carolina 29211
Telephone: (803) 212-6810 • Fax: (803) 212-6811
Room 228 Blatt Building

MEETING MINUTES

Tuesday, June 5, 2023
Immediately upon adjournment of the House
Room 521

Archived Video Available

- I. Pursuant to House Legislative Oversight Committee Rule 6.7, South Carolina ETV was allowed access for streaming the meeting. You may access an archived video of this meeting by visiting the South Carolina General Assembly’s website (<http://www.scstatehouse.gov>) and clicking on Committee Postings and Reports, then under House Standing Committees click on Legislative Oversight. Then, click on Video Archives for a listing of archived videos for the Committee.

Attendance

- I. The Education and Cultural Subcommittee meeting was called to order by Chair Timothy A. “Tim” McGinnis on Tuesday, June 5, 2023, in Room 521 of the Blatt Building. Four subcommittee members (Chair McGinnis; Representative Josiah Magnuson; and Representative John R. McCravy, III) were present, and one absent (Representative Adam Morgan) for all or a portion of the meeting.

Minutes

- I. House Rule 4.5 requires standing committees to prepare and make available to the public the minutes of committee meetings, but the minutes do not have to be verbatim accounts of meetings.

Approval of Minutes

Approval of Minutes

- I. Representative Magnuson made a motion to approve the meeting minutes from prior meeting. A roll call vote was held, and the motion passed.

Rep. Garvin's motion to approve meeting minutes.	Yea	Nay	Not Voting
Rep. Jones			✓
Rep. Magnuson	✓		
Rep. Morgan			✓
Rep. McCravy	✓		
Rep. McGinnis	✓		

Discussion of Commission on Higher Education

- I. Chair McGinnis calls the meeting to order. Members introduce themselves and Rep. Magnuson gives an opening prayer.
- II. Agency director, Dr. Rusty Monhollon, and members of his executive team are present. The director continued to provide an overview of agency. Topics of discussion include:
- a. Changing landscape of higher education (e.g., demographics, stagnant enrollment, rising costs, relevance of higher education to the modern world)
 - b. Agency history
 - c. Postsecondary Governance Models
 - d. Ascend 60x30
 - e. Agency counterparts (e.g., U.S. Department of Education,, etc.)
 - f. Agency head qualifications
 - g. Commission purpose and responsibilities
 - h. Commissioner qualifications, selection, and training
 - i. Organizational chart
 - j. Administration division overview
 - k. Agency FTEs, retention, and training
 - l. Agency appropriations
 - m. Grants collaboration
 - n. Records retention and report compliance
 - o. Internal audit and risk mitigation
 - p. Agency performance measures

- q. Agency accomplishments
- r. Agency related body entities

Adjournment

- I. There being no further business, the meeting is adjourned.



AGENCY SNAPSHOT



South Carolina House of Representatives Legislative Oversight Committee

COMMISSION ON HIGHER EDUCATION OVERVIEW

ABOUT



- The South Carolina Commission on Higher Education (CHE) was established in 1967 and serves as the coordinating board for South Carolina's 33 public institutions of higher learning.
- CHE is committed to promoting access, affordability, and excellence within the state system of higher education.
- CHE acts both as an oversight entity on behalf of the General Assembly and an advocate for the citizens of South Carolina as they seek opportunities to improve their lives and those of their families, through higher education.

LEADERSHIP

Agency Head

- Dr. Rusty L. Monhollon became CHE's president and executive director in July of 2019.
- § 59-103-90: Manage and carry out duties of Commission; ensure staff has professional competence and experience
- Commission appoints agency head to manage and carry out duties as prescribed by law and assigned by the Commission

Commission

- 15-member board selected per § 59-103-10
- Eight appointed by Governor, with advice and consent of Senate
- Seven appointed by the governor upon the recommendation of the legislative delegation from the Congressional district

ROLE

The agency performs a range of work to support and coordinate the state system of higher education. Generally, this entails:

- Administering state, regional, and federal programs, in addition to state-funded lottery scholarships and grants.
- Approving new academic degree programs and institutions' revisions to mission statements.
- Collecting, analyzing, and reporting comprehensive data on postsecondary education in South Carolina.
- Coordinating the interests of federal and state government, institutions of higher education, public K12 education, students and their families, and the business community.
- Licensing non-public educational institutions operating and soliciting within the state.
- Recommending policy to the governor, the General Assembly, and relevant state agencies using data.
- Reviewing the productivity of existing academic programs and institutions' missions to see they are advancing defined state goals.

FTEs/BUDGET

FY 2022-23



PERFORMANCE MEASURES

- 1 **Increase Higher Education Enrollment**
Strategy 1: Assist families with planning for higher education costs
Strategy 2: Increase family awareness of postsecondary education opportunities
Strategy 3: Obtain grants targeting K-12 population to prepare them for postsecondary education
- 2 **Promote Quality and Excellence of South Carolina's Higher Education System**
Strategy 1: Promote on-time degree completion
- 3 **Improve Affordability and Accessibility of South Carolina Higher Education Programs and Services for Students and Families**
Strategy 1: Promote high-quality early college opportunities
Strategy 2: Advance cost-saving opportunities to obtain a postsecondary credential
- 4 **Promote Higher Education's Value to the State's Economic Growth and Human Capital Development**
Strategy 1: Collaborate with peer agencies and institutions

STATISTICS

FY 2021-22 State Appropriations to Public Colleges and Universities

\$731,848,791

8.4% of FY 2021-22

Total State recurring Appropriations

Total Number of Institutions	84
Public Institution Total	33
Independent Institution Total	25
Out-of-State Degree Granting	24
Fall 2021 Grand Total Headcount Enrollment	230,566
FY 2020-21 Grand Total Degrees Awarded	55,428

SC House Legislative Oversight Committee Page 10



AGENCY PRESENTATION



South Carolina
Commission on Higher Education
Access | Affordability | Excellence

Office of Data Management & IT

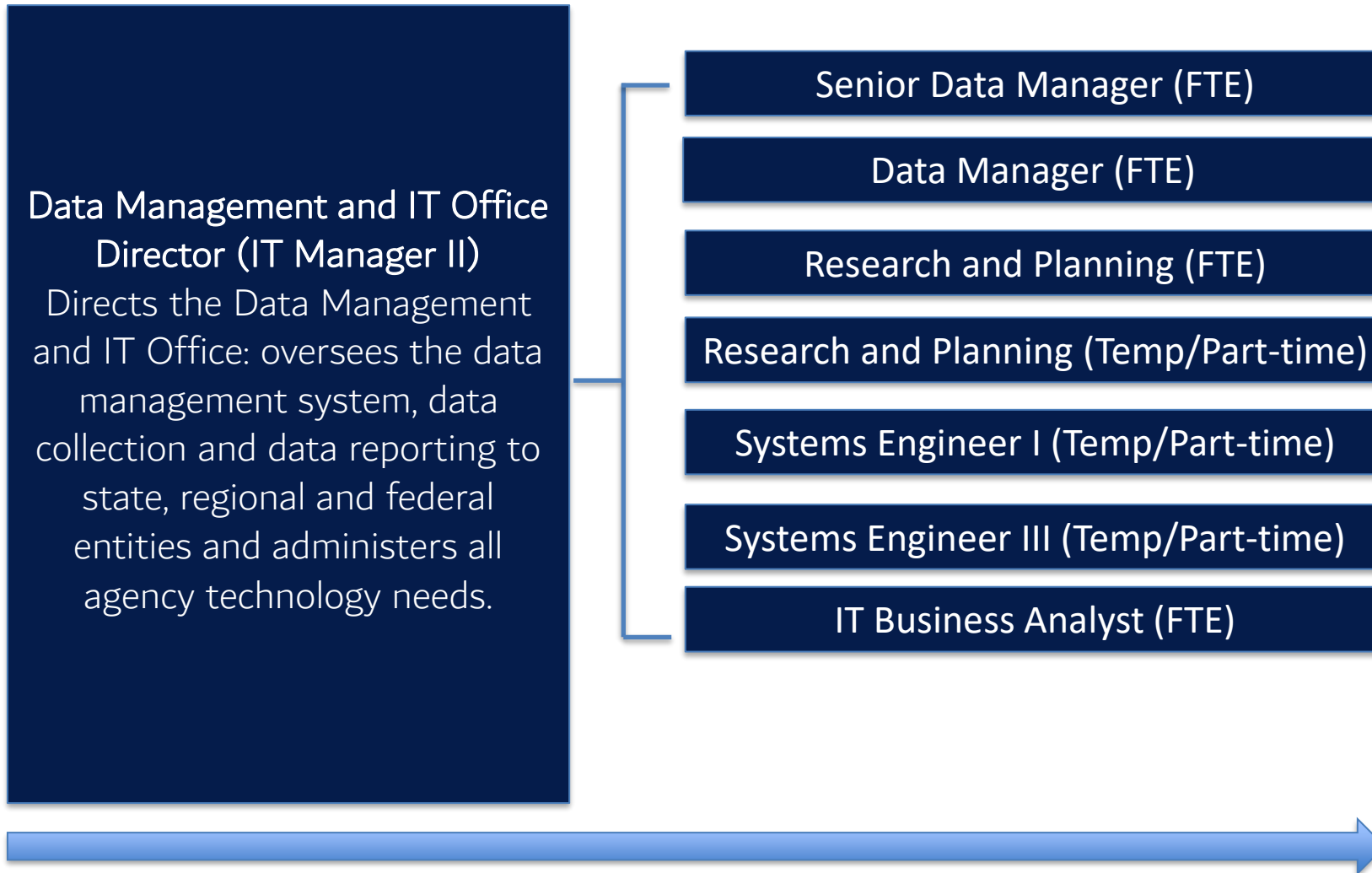
Monica Goodwin

Director of Data Management & IT

Office Purpose

- The Office of Data Management & IT oversees the Commission on Higher Education Management Information System (CHEMIS), data collection, data reporting to state, regional and federal entities
- The office serves as the agency technology liaison with the Department of Administration, Division of Technology Operations

Organizational Chart



Human Resources Information

- FY 20 Turnover Rate 0%
- FY 21 Turnover Rate 54.55% (2 employees)
- FY 22 Turnover Rate 0%
- FY 23 Turnover Rate 22.73% (1 employee)

Manual Entry Information

- One employee
- 10% of current job responsibilities
- Annual Cost \$7,650
- Automation (5/24/2024)

Office Internal Operation

- Two primary functions
 - Data Collection
 - Standard Data Reporting
 - Information Technology
 - Liaison for the Department of Administration, Division of Technology Operations

Office Responsibilities

- SC Commission on Higher Education Management Information System (CHEMIS)
 - Data
 - Collection
 - Standard Reporting
 - Higher Education Statistical Abstract

Data Collection

2022-23 CHE Data Submission Dates

Data Component	2022 -23 Academic Year							
	Fall Collection		Spring Collection		Summer I		Summer II	
	Open	Close	Open	Close	Open	Close	Open	Close
Completions	August 22/2022	September 29/2022		N/A		N/A		N/A
Course	August 22/2022	October 31/2022	December 5/2022	March 30/2023*	April 17/2023	August 21/2023*	June 19/2023	August 21/2023*
Disbursements	August 22/2022	October 31/2022	December 5/2022	March 30/2023	April 17/2023	June 15/2023	June 19/2023	August 21/2023
Enrollment	August 22/2022	October 31/2022	December 5/2022	March 30/2023*	April 17/2023	August 21/2023*	June 19/2023	August 21/2023*
Facilities	August 22/2022	October 31/2022	December 5/2022	March 30/2023*	April 17/2023	August 21/2023*	June 19/2023	August 21/2023*
Faculty	August 22/2022	November 18/2022		N/A		N/A		N/A

* Public Institutions Only

** Optional submission for changing student identification numbers



Completions

- Completion data is a student record containing information about the degree awarded and demographic information on the student
- Awards are reported to CHE by the end of September for awards conferred during the prior academic year
- The awards reported to CHE align with the Federal data requirements for reporting to the Integrated Postsecondary Education Data System

Course

- Public institutions report course data each semester for courses with active enrollments
- Course data is reported aggregated at the student level, meaning the course data is not connectable to individual students
- The course data is collected mid-semester and provides general information on courses meeting during the semester, the students enrolled in those courses, and the staff serving as instructors of record

Disbursements

- Disbursement data is reported to the CHE at the award level
- Institutions report a record per student per semester for each state sponsored merit or need based award received and for federal Pell grants
- Individual students may have multiple records per semester if they receive multiple awards that semester
- Data is collected mid-semester and institutions are expected to reconcile the data during later data collection periods if changes or revisions occur

Enrollment

- Enrollment data is reported to the CHE at the student level
- Institutions report one enrollment record per student per semester for all students enrolled in courses creditable toward a diploma, certificate, degree
- Data is collected mid-semester and represents the student's status at the institution's matriculation date

Facilities

- The CHE collects facilities data from all public institutions
- Institutions provide room identification and building summary data along with course data to calculate facility utilization metrics

Faculty

- The Commission on Higher Education collects faculty data from the public colleges and universities
- The faculty data submission includes rank and tenure status along with race and gender information

Data Collection Process

Excel File Layout

1

- 66 Public and Independent Colleges and Universities upload data to CHE.
- The data is uploaded by semester (Fall, Spring, Summer I and Summer II)
- There are six domains (Completions, Course, Disbursement, Enrollment, Facility and Faculty)

Data Collection Process.

2

Secure Web Portal

- Data is uploaded to CHE via a secure website.
- The process to upload the data is known as ETL
- During the ETL process the data is combined into a single, consistent data store that is uploaded into CHEMIS

Data Collection Process.

3

ETL Process

- During the ETL Process the data goes through three cycles before it is stored into CHEMIS
- File layout validation
- Business validation
- File Transfer

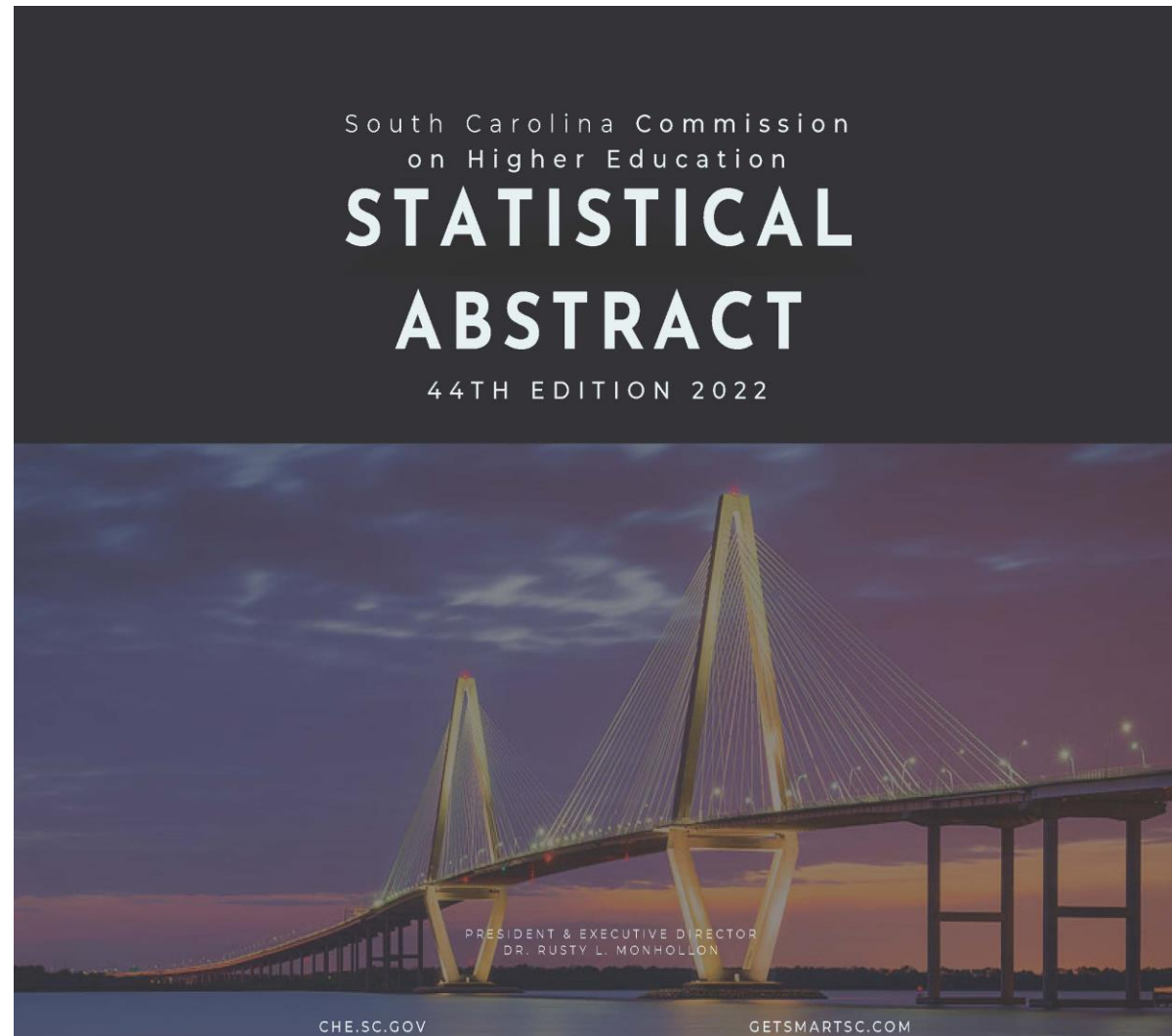
Data Collection Process.

4

Data Processing

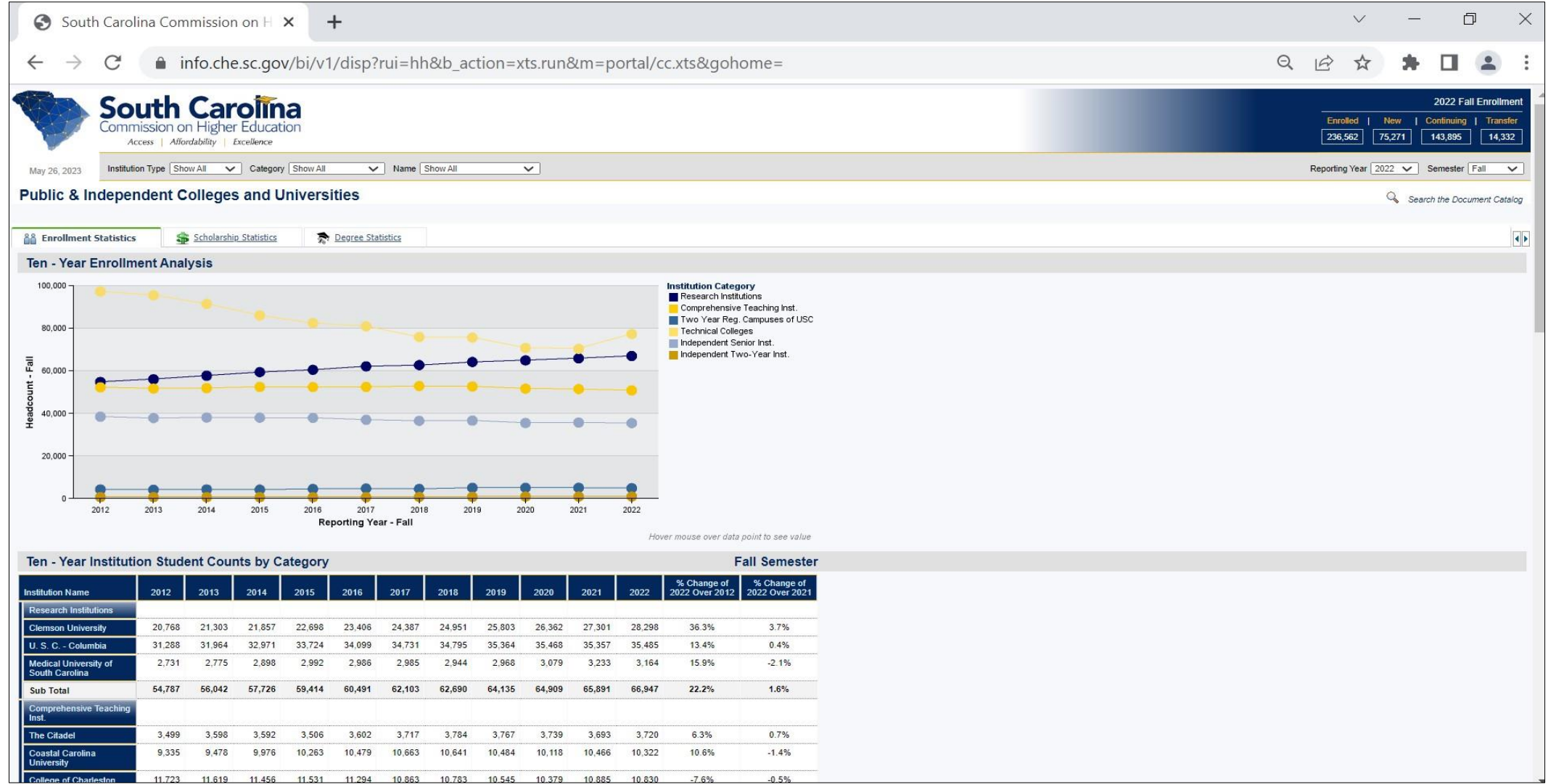
- The data is stored in CHEMIS
- Staff extracts the data using SQL coding to return the specific requirements for each report and requests.
- SQL- is an industry programming language use for querying database data.
(Standard Language Query)

Annual Publication

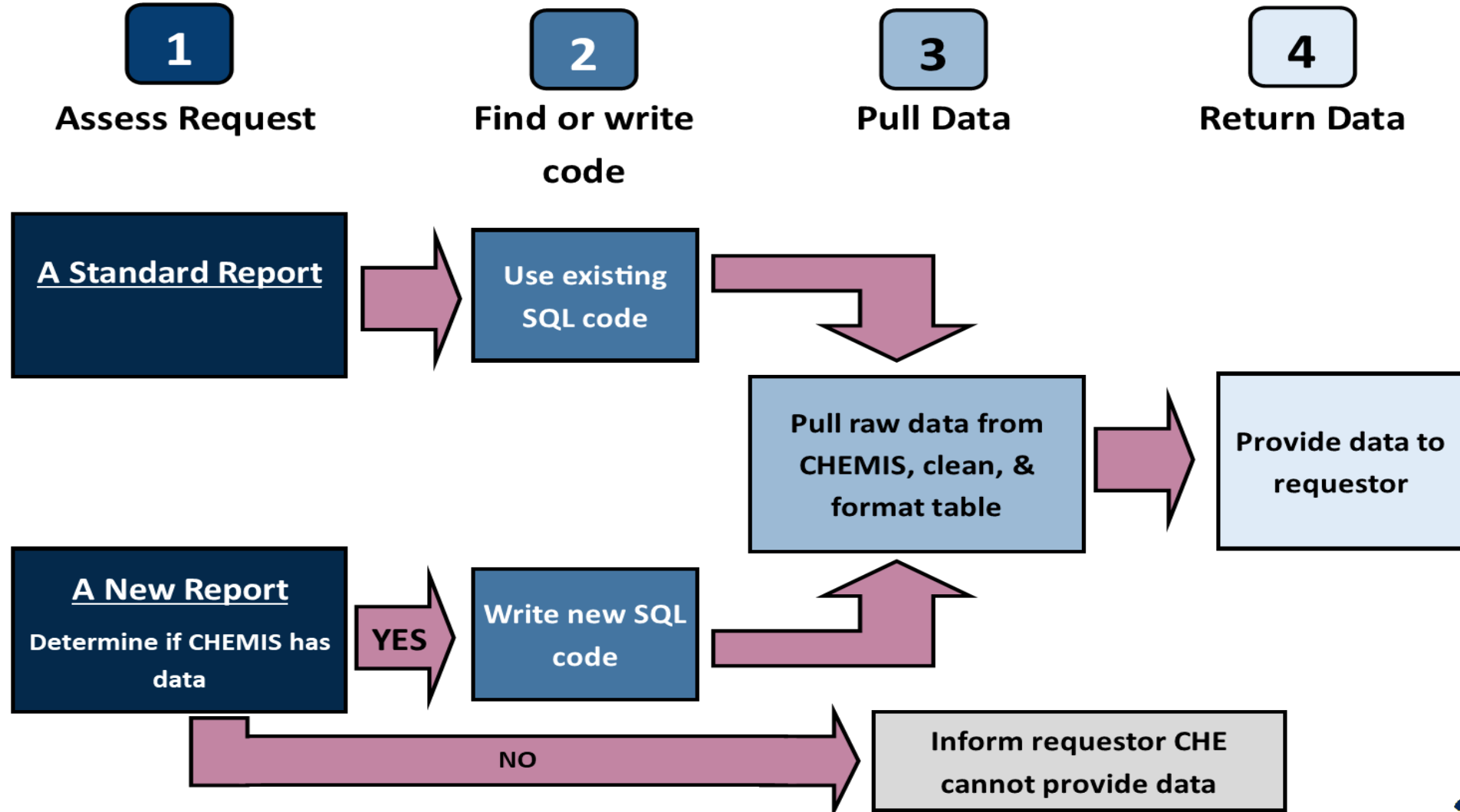


Enhanced Data-Dashboard

The Office of Data
Management & IT



Internal Data Requests



Annual Data Reporting

- National
 - Integrated Postsecondary Data System (IPEDS)
- Regional
 - South Regional Education Board (SREB)
- State
 - South Carolina Revenue & Fiscal Affairs (SCRFA)

Office Responsibilities

Information Technology Shared Services

- Servers
- Security
- Back-up
- Hardware
- Software

Application Upgrade

- Data Collection Capacity
- Data Reporting
- Skilled Labor
- System Compatibility

Technology Upgrades

- Office 365
- Managed print services
- Intranet
- Helpdesk

Questions?



South Carolina
Commission on Higher Education
Access | Affordability | Excellence

Academic Affairs & Licensing

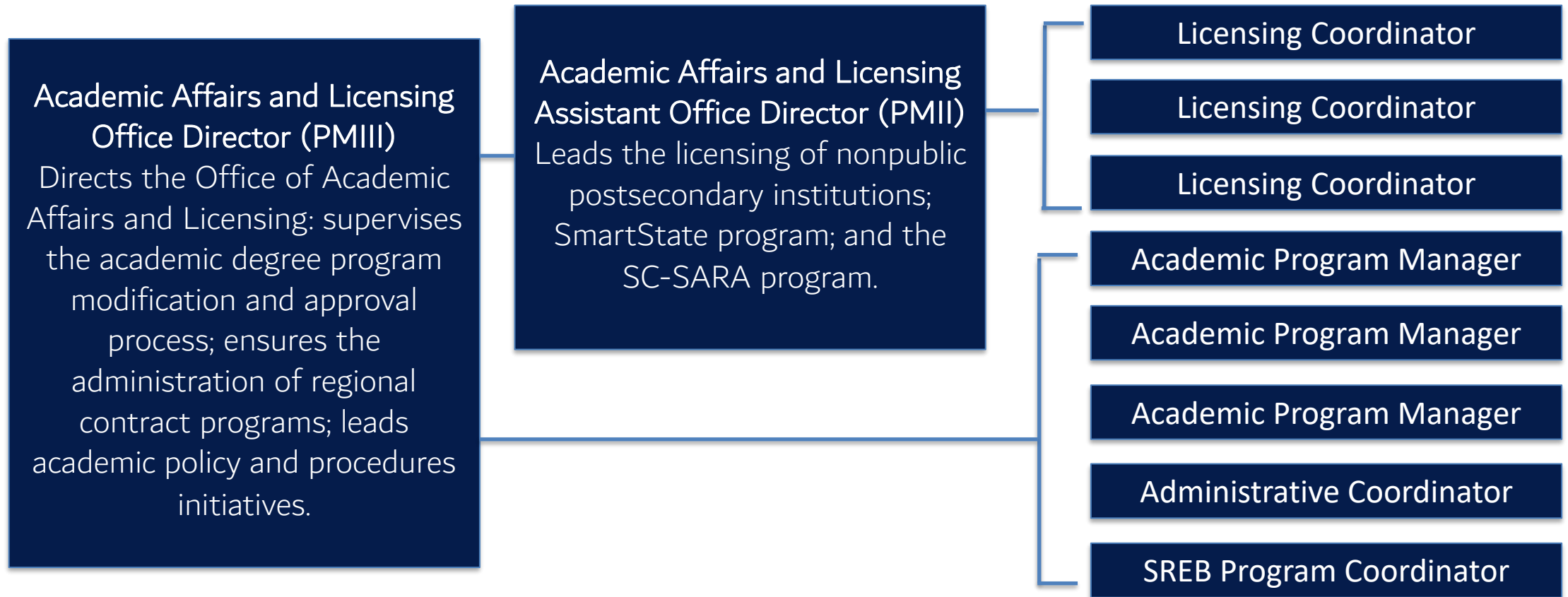
Mariam Dittmann, Ph.D.

Director of Academic Affairs & Licensing

Academic Affairs & Licensing Purpose

The Office of Academic Affairs & Licensing is responsible for academic program review and approval, interstate contract programs, licensing nonpublic institution operations, research and innovation management, and academic policy development.

Organizational Chart



Human Resources Information

- Rewrote position postings
- Balanced workload
- Increased professional development opportunities
- Increased salaries

Year	Turnover	Avg # Staff
2019-2020	8.33%	12.00
2020-2021	67.29%	8.92
2021-2022	25.53%	7.83
2022-2023	36.59%	8.20

Manual Entry Information

- Academic Program Approval Process
- NC-SARA
- Institutional Effectiveness Reports
- Licensing Applications
- Transcripts & Education Verification
- SREB Applications

Office Internal Operations

- Academic Program Review and Policies
- Licensing Process
- State Authorization Reciprocity Agreement (SARA)
- SmartState Program and Board Overview
- Academic Common Market
- Regional Contract Program
- REACH Act Compliance
- Institutional Mission Level and Mission Statement Review
- Scholarship Enhancement Eligibility
- Student Complaints
- Closed Institution Student Records Repository
- Academic Research and Reporting



Academic Program Review Responsibilities

- Evaluate academic proposals for new programs, modifications, and notifications on behalf of a public institution and facilitate the Commission approval process for new academic programs. (Statute 59-103-35)

Academic Program Approval Process

1

Notifications

- Staff review
- Questions to Institutions
- Staff review revisions
- Transmit acknowledgment
- Update Academic Program Inventory (API)

2

Modifications

- Staff review
- Questions to Institutions
- Staff review revisions
- Prepare for ACAP
- ACAP considers for approval
- Transmit approval
- Update API

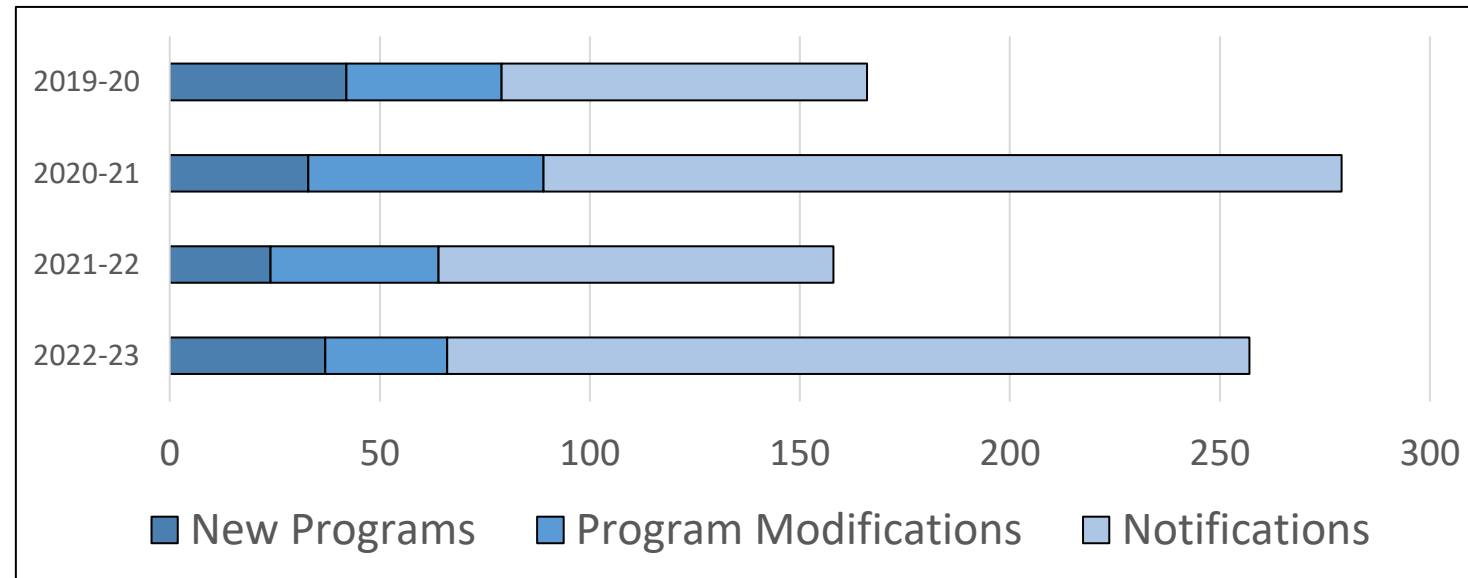
3

New Programs

- Staff review
- Questions to Institutions
- Staff review revisions
- Prepare for ACAP
- ACAP considers approval
- Prepare for CAAL
- CAAL considers for approval
- Prepare for CHE
- CHE considers for approval
- Transmit approval
- Update API

Academic Program Review

Type of Proposal	2019-20	2020-21	2021-22	2022-23
New Programs	42	33	24	37
Program Modifications	37	56	40	29
Notifications	87	190	94	191



Licensing Responsibilities

- Process new, renewal, and exempt license applications, as well as program and location change requests and sales representative (agent) applications for non-public post-secondary institutions. (Statute: 59–58–10 through 59–58–140 and Regulations: 62 – 1 through 62-100)

Licensing

1

Non-Degree Granting

- Receive inquiries
- Conduct orientation
- Review documents
- Questions to institution
- Review revisions
- Transmit license
- Submit updates

2

Degree Granting

- Receive inquiries
- Conduct orientation
- Review documents
- Questions to institution
- Review revisions
- Prepare for CAAL
- CAAL considers approval
- Prepare for CHE
- CHE considers approval
- Transmit approval
- Submit updates

Licensing

Type of Proposal	2019-20	2020-21	2021-22	2022-23
New License	7	15	4	21
License Renewal	36	72	49	63
Amendments	16	15	33	13

State Authorization Reciprocity Agreement Responsibilities

- Manage nationally-based interstate reciprocity program, SARA (State Authorization Reciprocity Agreement), to provide SC students access to specific course offerings out-of-state and allow SC institutions opportunity to provide course offerings to out-of-state students, both at significant cost savings. (Statute: 59-103-17)

State Authorization Reciprocity Agreement

- Receive and review application
- Communicate questions to institution
- Review revisions
- Notify NC-SARA
- NC-SARA sends a payment link to the institution
- Institution sends payment to NC-SARA
- NC-SARA confirms payment and lists institution on NC-SARA website

State Authorization Reciprocity Agreement

- We have 46 participants in SARA statewide.
 - Four-Year Public Institutions: 13
 - Technical Colleges: 11
 - Private Institutions: 22

SmartState Responsibilities

- Manage the SmartState Program, a research innovation initiative that works to establish endowed chairs in critical workforce subjects, by convening the Council of Chairs and compiling annual information about chairs and centers and calculating the return on investment by the state.

(Statute 2-75-5 through 2-75-110)

Smart State

The primary mission of the SmartState Program is to generate high-skilled, high-wage jobs in South Carolina. The SmartState Program supports the ongoing development of the knowledge economy. Jobs in the knowledge economy are among the highest-paid in South Carolina.

As of 2021, the SmartState Program is responsible for helping to create and support approximately **19,465 jobs in South Carolina**, which are associated with **approximately \$3.9 billion in economic activity and \$1.2 billion in labor income**.

Smart State

- **6 industry clusters** (Advanced Materials and Nanotechnology, Automotive and Transportation, Biomedical, Energy, Information Science, and Pharmaceutical)
- **51 Centers of Economic Excellence** employing **74 Endowed Chairs**
- **\$77,613** is the average salary of the jobs associated with this program
- **19,465 individuals** are employed as a result of this program. Of these, **12,019 are indirect employment** arising from the economic multiplier effect
- **45 corporations** have donated \$500,000 or more to the program
- **55 Start-up companies** have been established
- **55 corporations** have relocated to South Carolina to be close to a center and the ongoing research



Academic Common Market Responsibilities

- Manage the Academic Common Market, a regionally-based interstate reciprocity program of the Southern Regional Educational Board (SREB) through verifying residency for students to pay in-state tuition rates for unique, out of-state degree programs, and by ensuring the list of South Carolina's program offerings are correctly described in the Academic Common Market. (R62-609(C))

Academic Common Market

1

Approved Program

- Student is admitted
- Student verifies program is approved
- Student submits SC Residency Application
- Application is reviewed
- Student/Institution notified of result

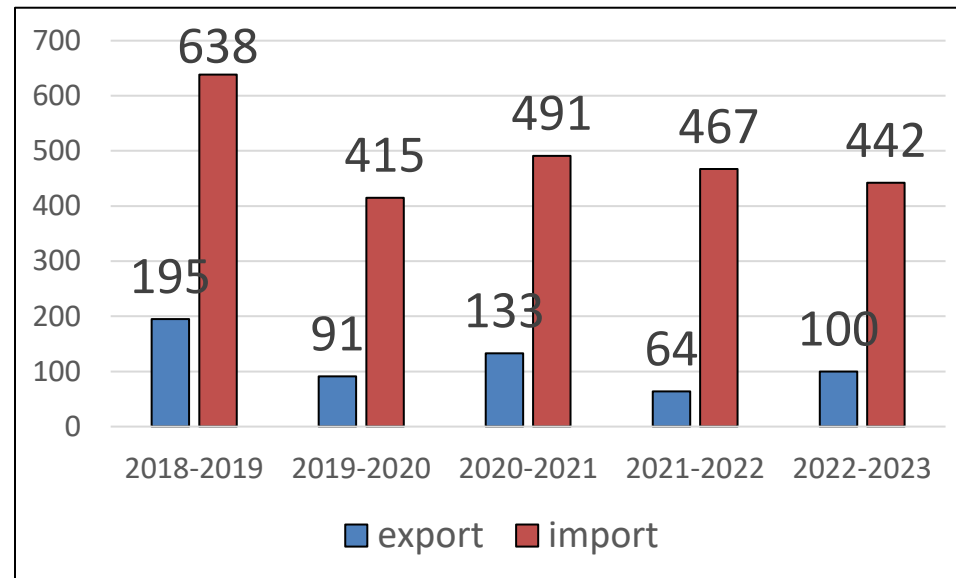
2

Non-Approved Program

- Student submits request to add program
- Staff requests of similar programs
- Student notified
- If approved, program is added to inventory
- Student applies for residency verification

Academic Common Market

- Ten institutions offer 150 programs through the ACM.
- Net Importer State



Regional Contract Program Responsibilities

- Manage the Regional Contract Program, a regionally-based tuition-savings program of the Southern Regional Educational Board (SREB) for professional health degrees by verifying residency for students to pay reduced tuition rates for specific graduate degree programs through contracted seats in Veterinary Medicine and Optometry.
(R62-609(B))

Regional Contract Program

- Student applies for admission with institution
- Student submits SC Residency Application
- Documents are reviewed
- Student/Institution notified of result
- Institution considers student for entrance into contract program

Regional Contract Program

- Veterinary Programs

Institution	Students	Cost
Mississippi State University	27	\$904,500
Tuskegee University	27	\$904,500
University of Georgia	87	\$2,914,500

- Optometry Programs

Institution	Students	Cost
Southern College of Optometry	5	\$96,000
University of Alabama Birmingham	3	\$57,600
University of Pikeville	3	\$57,600

REACH Act Compliance

- Review institutional REACH Act compliance to ensure that each student receiving a Baccalaureate degree from a public four-year college or university in South Carolina has studied the specified founding documents. (Section 59-29-130)

Institutional Missions

Per Statute (59-103-45 (6)), the CHE has the responsibility to review and approve each institutional mission statement to ensure it is within the overall mission of that type of institution and within the overall mission of the state.

Per Act 41 (2023), the state established a new category of public institution: the Professional Doctorate University. To date, four institutions have been elevated to this category.

- Francis Marion University
- College of Charleston
- Coastal Carolina University
- University of South Carolina Upstate

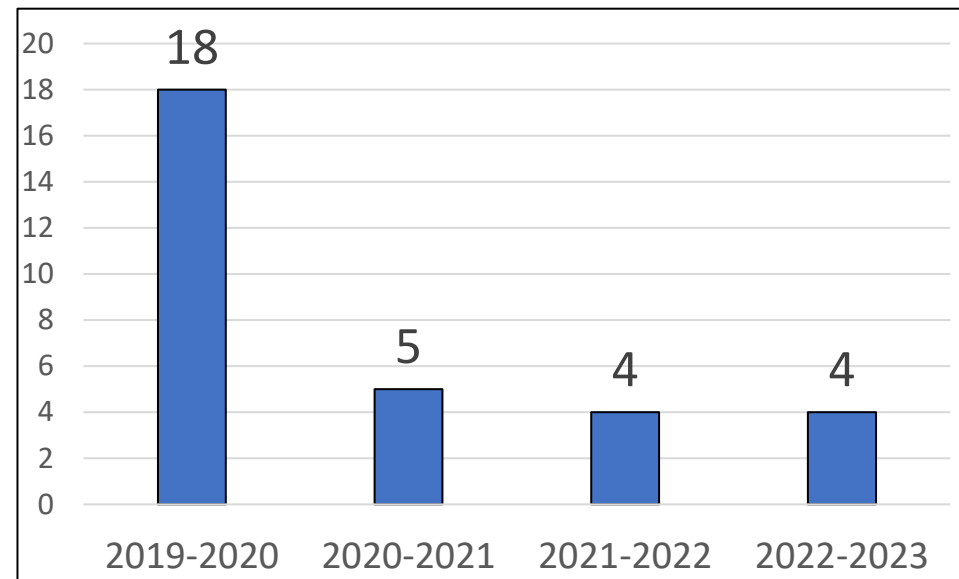
Scholarship Enhancement Eligibility

Scholarship Enhancements are awarded to eligible students majoring in approved mathematics and science programs beginning in their second/sophomore year based on their date of initial college enrollment. (Statute 59-104-25 and 59-149-15)

There are currently over 150 approved programs offered through thirteen public four-year institutions and twenty-one private four-year institutions.

Student Complaints

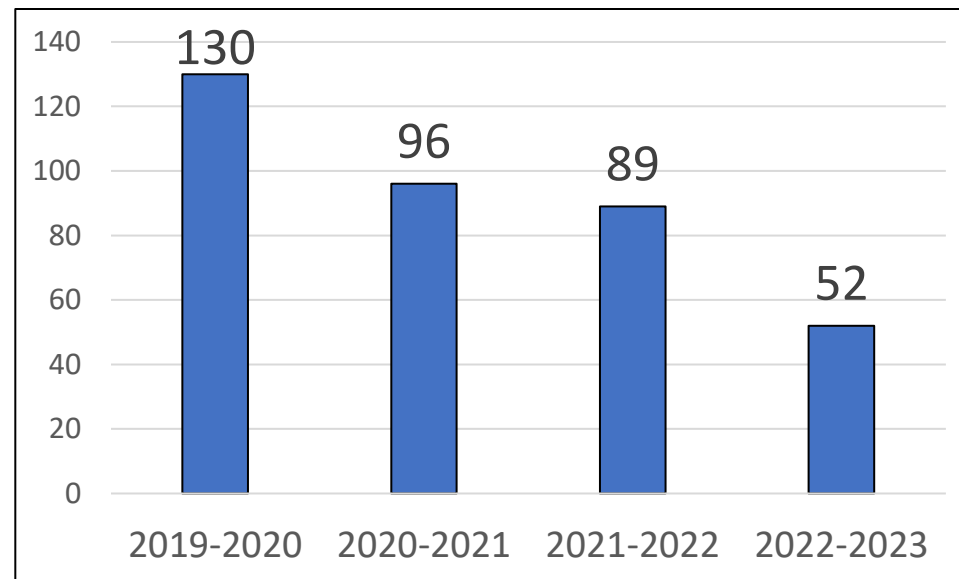
- Investigate student complaints against SC postsecondary institutions by working with both the student and the institution to identify the concern, review relevant information from both parties, and to seek a resolution based on the facts of the complaint. (R: 62-27)



2023 CHE Presentation to House Legislative Oversight Committee

Closed Institution Student Records Repository

The Commission serves as the repository for some student records from licensed institutions that have closed. We currently hold the records for approximately 30 closed institutions. Students and potential employers may request copies of transcripts and verification of educational credentials.



Academic Research and Reporting

- Academic Common Market Report
- Admissions Standards for First-Time Entering Freshmen
- Associate Degree Evaluation Report
- Academic Program Inventory and Annual Changes
- Licensing Activity Report
- Program Duplication Report
- Program Productivity Report
- REACH Act Compliance
- Smart State Annual Report and Audit
- Staff-Approved Mission Changes Report
- State Authorization Reciprocity Agreements (SARA) Activities Report

Questions?





South Carolina
Commission on Higher Education
Access | Affordability | Excellence

Office of Student Affairs

Karen Woodfaulk, Ph.D.

Director

Agency Purpose, Vision and Mission

- SC Code of Laws, primarily Title 59, Chapter 103
- Mission of higher education in South Carolina (59-103-15)
 - global leader
 - coordinated, comprehensive *system of excellence*
 - instruction, research, and life-long learning opportunities
 - focused on economic development and benefitting the state
- Goals include:
 - high academic quality
 - affordable and accessible education
 - instructional excellence
 - coordination and cooperation with public education
 - cooperation among various constituents
 - economic growth
- System of excellence, statewide perspective

Office Mission

- Administration of state scholarship and grant programs
- Promote access and affordability, through coordination, regulation, advocacy and oversight, as directed by the General Assembly

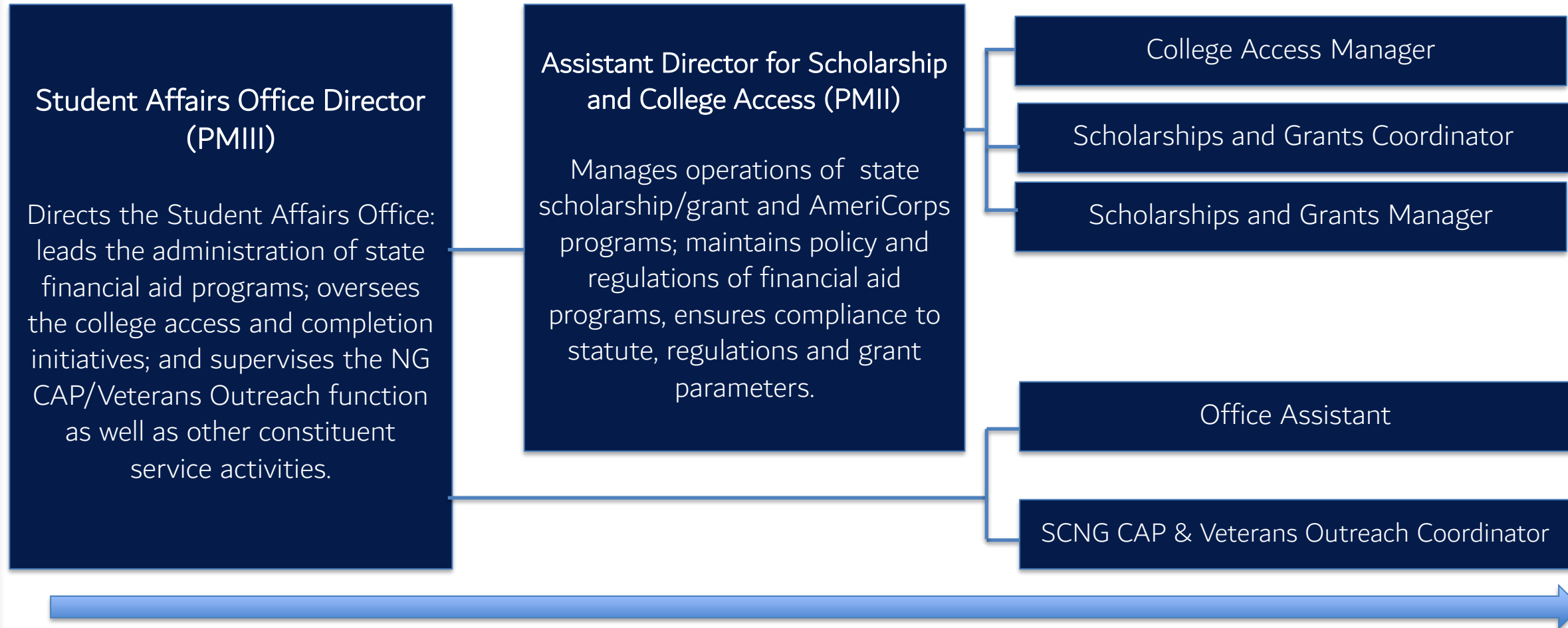
Office Responsibilities

- Responsible for the administration of state financial aid programs, in accordance with statutes and regulations
 - Palmetto Fellows
 - LIFE
 - SC HOPE
 - Lottery Tuition Assistance
 - SC Need-Based Grants
 - College Transition Program Need-based Grant
 - Foster-Care Need-based Grant
 - SC National Guard College Access Program

Office Responsibilities

- Scholarship Appeals
- College Access Initiatives
 - College Application Events
 - College Goal SC
 - College and Career Decision Day Events

Organizational Chart



Office of Student Affairs

	Number of Employees Beginning Fiscal Year (July 1)	Number of Employees Ending Fiscal Year (June 30)	Average Number of Employees	Number of Separations	Turnover Rate
2019 - 2020	9.00	10.00	9.17	1.00	10.91%
2020 - 2021	10.00	8.00	9.58	1.00	10.43%

Manual Entry Information

- Electronic application information is downloaded into Excel
- Paper application documents
- Downloaded into a spreadsheet and then manually keyed into AS400:
 - Palmetto Fellows Applications (30-35 hours per week)
 - Palmetto Fellows/LIFE Scholarships Rank Reports (1-2 Hours per week)
 - Palmetto Fellows Transfer/Reapplication Requests (1-2 hours per week)
 - Palmetto Fellows Transfer/Reapplication Requests (1-2 hours per week)
 - Scholarship Appeals (7-10 hours per week)
 - College Transition Program (5-6 hours per week)

Scholarship and Grants Appropriations

- 2022-23: \$426,394,175 scholarship and grant funds awarded to six main programs:
 - SC HOPE: \$10,904,039
 - LIFE: \$235,150,272
 - Palmetto Fellows: \$72,139,864
 - Lottery Tuition Assistance: \$51,100,000
 - Need-based Grants: \$70,000,000
 - Additional \$12,000,000 from Educational Endowment
 - South Carolina National Guard College Assistance Program: \$6,200,000

**Data from 2022 Statistical Abstract*

Financial Aid Programs Compared to Other States (2020-21)

- South Carolina, Georgia, Louisiana, Virginia, and Washington provided the greatest amount of state aid on a per capita basis
- South Carolina (\$2,589/student), Georgia, Washington, Louisiana, and Tennessee provided the most undergraduate grant dollars in relation to undergraduate FTE enrollment
- South Carolina (36%), Louisiana, Colorado, Virginia, and Georgia had the highest proportion of total expenditures for state-funded aid compared to State fiscal support for higher education

Palmetto Fellows Scholarship

(Statutory Authority: 59-104-20)

2021-22: 9,341 Students

History

- 1988: Palmetto Fellows Scholarship program created
- 1996: Institutional match requirement removed
- 2002: Increased to \$6,700 for the first academic year and up to \$7,500 for the second, third, and fourth years
- 2021: Palmetto Fellows Scholarships at eligible two-year institutions or technical colleges

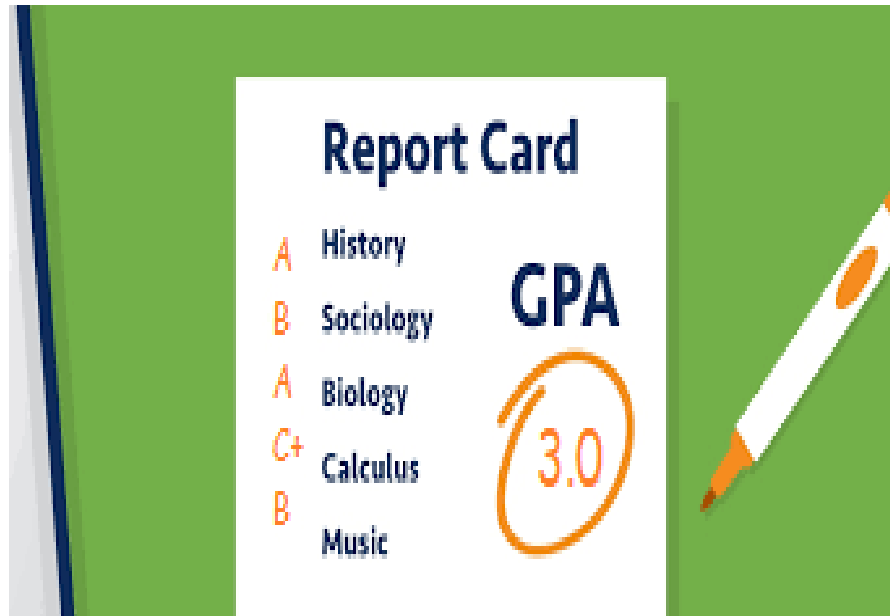
Palmetto Fellows Scholarship Eligibility Criteria

- Eligibility Criteria (must meet **three** criteria):
 - Rank in the top 6% at the end of the 10th, the 11th, or the 12th grade academic year; *and*
 - Earn 1200 on the SAT or a 25 on the ACT; *and*
 - Earn a 3.5 cumulative GPA (based on SC Uniform Grading Policy)

OR
- Alternate Criteria (must meet **two** criteria):
 - Earn 1400 on the SAT or 31 on the ACT; *and*
 - Earn a 4.0 cumulative GPA (based on SC Uniform Grading Policy)

Continued Eligibility Criteria

- Maintain a 3.0 cumulative home institutional GPA (for graduation purposes) and earn 30 credit hours each academic year



Cumulative home institutional grade point average (GPA): Divide the total number of quality points earned in all courses by the total credit hours in all courses attempted at the student's home institution

Award Process

- High school counselor initiates application process
- CHE staff reviews applications manually for verification and accuracy
- Students are sent Palmetto Fellows Notification emails
- Eligible students notify CHE which institution they plan to attend the following school year
- Institutions verify residency and award, if requirements are met

Data

Palmetto Fellows Scholarship Recipients' Fall Only Retention Rate from Year 1 to Year 2: 2005-2022

	Palmetto Fellows Retention Rate from Year 1 to Year 2		Palmetto Fellows Retention Rate from Year 1 to Year 2
Fall 2005	89.0%	Fall 2014	89.4%
Fall 2006	88.5%	Fall 2015	90.7%
Fall 2007	89.7%	Fall 2016	90.6%
Fall 2008	90.7%	Fall 2017	90.5%
Fall 2009	88.5%	Fall 2018	89.1%
Fall 2010	90.2%	Fall 2019	89.4%
Fall 2011	91.3%	Fall 2020	89.8%
Fall 2012	91.1%	Fall 2021	88.6%
Fall 2013	91.8%	Fall 2022	89.4%

Average Retention Rate from Year
1 to Year 2

89.9%

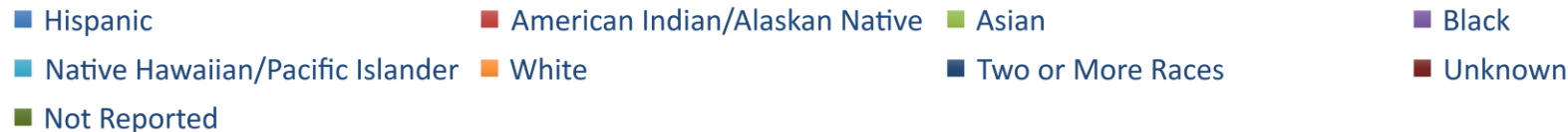
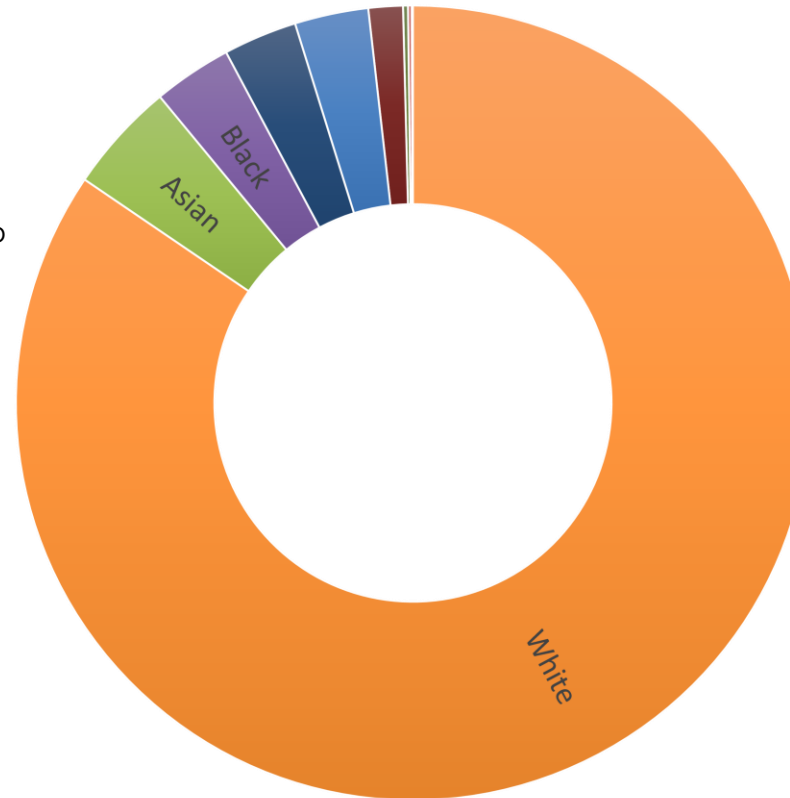
Data

Palmetto Fellows Scholarship Recipients 2008-2022 (Fall Only): Race/Ethnicity and Gender

Fall Term Only Demographics:

Hispanic/Latino: 3,293 = 3%
American Indian/Alaskan Native: 178 = .15%
Asian: 5,113 = 4.5%
Black/African American: 3,573 = 3.2%
Native Hawaiian/Pacific Islander: 54 = .05%
White: 94,993 = 84.5%
2 or More Races: 3,390 = 3%
Unknown: 1,591 = 1.4%
Not Reported: 211 = .20%
Total Fall Recipients: 112,396

Recipient Ethnicity



Gender:

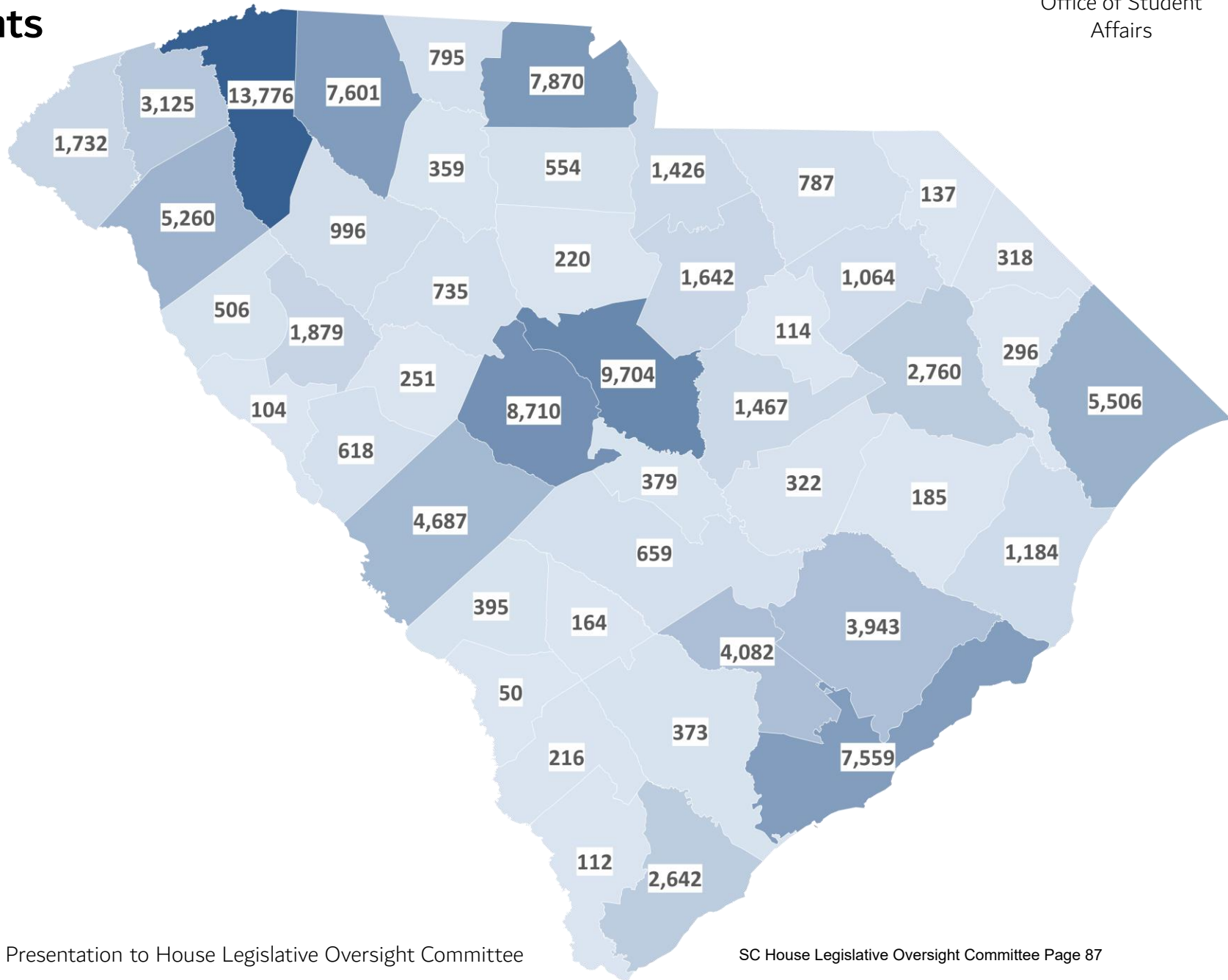
Male: 46,558 = 41.4%
Female: 65,627 = 58.4%
Not Reported: 211 = .2%

Palmetto Fellows Recipients Fall 2008 - Fall 2022 County Information

Fall Term Only County Data

Total Fall Recipients: 112,396

- * Not included on map:
- 329 Out-of-state
- 4,576 Unknown



Math and Science Scholarship Enhancement

- 2007: Math and Science Scholarship Enhancement
- Available in the second year for Palmetto Fellows (and LIFE recipients) majoring in mathematics, science, or health fields
- Increases Palmetto Fellows Scholarship maximum award from \$7,500 to \$10,000, for up to six consecutive terms starting the second year of college enrollment

Eligibility Criteria for Math and Science Scholarship Enhancement

Scholarship Enhancement Eligibility Criteria:

At the end of the student's first year-

- Be a recipient of the Palmetto Fellows Scholarship; and
- Earn at least 14 credit hours in approved mathematics, life, and/or physical sciences (combination) by the end of first academic year; and
- Declare an approved major in science, mathematics, or a health-related field

Data

Palmetto Fellows Scholarship Fall Only Recipients and Enhancements Recipients: 2007-2022

	Palmetto Fellows Total Scholarship Recipients	Palmetto Fellows Receiving Enhanced Awards Recipients		Palmetto Fellows Total Scholarship Recipients	Palmetto Fellows Receiving Enhanced Awards Recipients
Fall 2007	5,148	1,480	Fall 2015	7,192	2,992
Fall 2008	5,516	1,837	Fall 2016	7,507	3,164
Fall 2009	5,894	1,979	Fall 2017	8,165	3,316
Fall 2010	6,125	2,151	Fall 2018	8,741	3,646
Fall 2011	6,415	2,355	Fall 2019	9,177	3,894
Fall 2012	6,672	2,509	Fall 2020	9,352	4,099
Fall 2013	6,823	2,680	Fall 2021	9,114	4,024
Fall 2014	6,993	2,849	Fall 2022	8,736	3,831

Note: Fall data reported by all institutions in the fall term

**Fall 2022 data is provisional and will not be finalized until Fall 2023.*

Pending Legislation – S. 125 Education Enhancement for LIFE and Palmetto Fellows Recipients

SECTION 2. Section [59-104-25](#)(A) and (B) of the S.C. Code are amended to read:

(A) A resident student who is at least a sophomore attending a four-year public or private institution of higher learning in this State, who is majoring in education, science, or mathematics as defined below, and who is receiving a Palmetto Fellows Scholarship for the current year, shall receive an additional Palmetto Fellows Scholarship stipend equal to the cost of attendance after applying all other scholarships or grants, not to exceed three thousand three hundred dollars each year for no more than three additional years of instruction, including his sophomore year, if the student enrolled in a four-year degree program, or for not more than four additional years of instruction, including his sophomore year, if enrolled in a five-year degree program or a 3 plus 2 program...

SECTION 2. This act takes effect upon approval by the Governor.

Status:

Passed Senate, Introduced in House and referred to Committee on Education and Public Works

LIFE Scholarship

(Statutory Authority: 59-149-10)

2021-22: 42,062 Students

History

- 1998: Legislative Incentives for Future Excellence (LIFE) Scholarship
- 2003: Current initial eligibility criteria was approved and total award amount was increased to \$5,000

Initial Eligibility Criteria

Two-year institutions:

- Earn a 3.0 minimum final high school GPA, based on the SC Uniform Grading Policy

Four-year institutions (Meet two of three criteria below):

- Earn a 3.0 minimum final high school GPA, based on the SC Uniform Grading Policy
- Earn a minimum score of 1100 on the SAT (24 on the ACT)
- Rank in the top thirty percent of their graduating class (SC Code 59-149-50)

Terms of Eligibility

- One-year certificate program: two consecutive semesters
- Associate's degree program: four consecutive semesters
- Bachelor's degree program: eight consecutive semesters (10 semesters if enrolled in an approved five-year bachelor's degree program)
- Act No. 36: six consecutive semesters - associate's degree program that requires a minimum of 68 credit hours for completion
 - A list of approved 68 credit hour Associates Degree programs is maintained on the CHE website:
http://www.che.sc.gov/sites/che/files/Documents/General%20Public/Associate_Degrees_68%2B_CHE_List.pdf

Continued Eligibility Criteria

- Act 162 (2005): Using grades/credit hours from all institutions attended, in-state and out-of-state students are allowed to maintain the LIFE Scholarship if they earn at least a 3.0 LIFE GPA and an average of 30 credit hours at the end of each academic year in college.
- The LIFE GPA is the cumulative GPA of all grades earned at all eligible colleges and universities.

What is a LIFE GPA?

Dual Enrollment

Includes ALL grades earned in Dual Enrollment while in High School

Includes non-passing grades

Even if you did not earn credit hours for the course, the GPA (D's and F's) are still included

All Colleges

Grades and credit hours earned at colleges both in-state AND out-of-state

All Terms

All grades and credit hours earned in Fall, Spring, AND Summer

Pending Legislation – S. 138 LIFE GPA and Dual Enrollment

SECTION 1. Section [59-149-50](#)(B) of the S.C. Code is amended to read:

(B) Students receiving a LIFE Scholarship to retain it and students currently enrolled in an eligible institution to receive such a scholarship must earn a 3.0 cumulative grade point average on a 4.0 scale and earn at least thirty credit hours each year for the maximum of semesters permitted at that institution by Section 59-149-60. The cumulative grade point average calculation, for purposes of LIFE scholarship eligibility, must be inclusive of the student's grade point average at all public or independent institutions attended by the student. Beginning with the 2023 high school graduating class, a grade in a dual enrollment class shall not prevent a student from retaining their LIFE scholarship for their second year.

SECTION 2. This act takes effect upon approval by the Governor.

Math and Science Scholarship Enhancement

Scholarship Enhancement Eligibility Criteria:

- Be a recipient of the LIFE Scholarship; and
- Earn at least 14 credit hours of instruction in mathematics and/or life and physical sciences by the end of first year
- At the end of the student's first year: Institutions evaluate for Scholarship Enhancement
- Scholarship Enhancement increases the LIFE Scholarship maximum award from \$5,000 to \$7,500 for up to 6 consecutive terms starting the second year

Award Process

- Automatically awarded by the institution's financial aid office once the college receives the final transcript, ranking report and test scores
- The funding for the LIFE Scholarship is protected by state funds (after Lottery)
 - All eligible students are awarded if there is room in their financial aid package
 - For 2021-22, CHE awarded \$210,891,388 in LIFE Scholarship funding to 42,062 recipients

Data

LIFE Scholarship Recipients' Retention Rate from Year 1 to Year 2 - 2016-2022: 50.7%

LIFE Scholarship Average Retention Rate: 2016-2022: 84.5%

	LIFE Retention Rate from Year 1 to Year 2	Average LIFE Retention Rate for Sophomores and Juniors
Fall 2007	47.4%	81.7%
Fall 2008	48.6%	86.6%
Fall 2009	49.7%	87.4%
Fall 2010	48.6%	86.0%
Fall 2011	50.7%	87.3%
Fall 2012	50.6%	86.0%
Fall 2013	50.4%	86.3%
Fall 2014	53.0%	86.7%

	LIFE Retention Rate from Year 1 to Year 2	Average LIFE Retention Rate for Sophomores and Juniors
Fall 2015	53.2%	86.3%
Fall 2016	52.4%	87.0%
Fall 2017	50.6%	82.4%
Fall 2018	49.6%	86.9%
Fall 2019	48.7%	84.3%
Fall 2020	52.7%	85.2%
Fall 2021	50.2%	81.6%
Average Retention Rate	50.1%	85.4%

Data

LIFE Scholarship Recipients and Enhancements Recipients: 2016-2022

	LIFE Scholarship Total Scholarship Recipients	LIFE Recipients Receiving Enhanced Awards		LIFE Scholarship Total Scholarship Recipients	LIFE Recipients Receiving Enhanced Awards
Fall 2008	29,182	4,228	Fall 2015	36,093	5,716
Fall 2009	31,094	4,269	Fall 2016	40,230	5,940
Fall 2010	31,664	4,257	Fall 2017	40,193	6,434
Fall 2011	32,162	4,467	Fall 2018	41,697	6,400
Fall 2012	33,054	4,857	Fall 2019	42,134	6,525
Fall 2013	33,811	5,134	Fall 2020	42,409	7,088
Fall 2014	34,882	5,435	Fall 2021	40,303	6,834

Note: Fall data reported by all institutions in the fall term

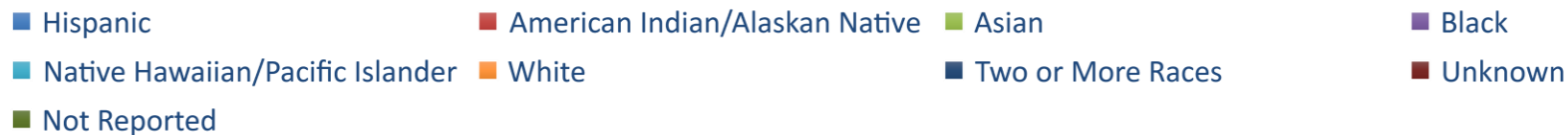
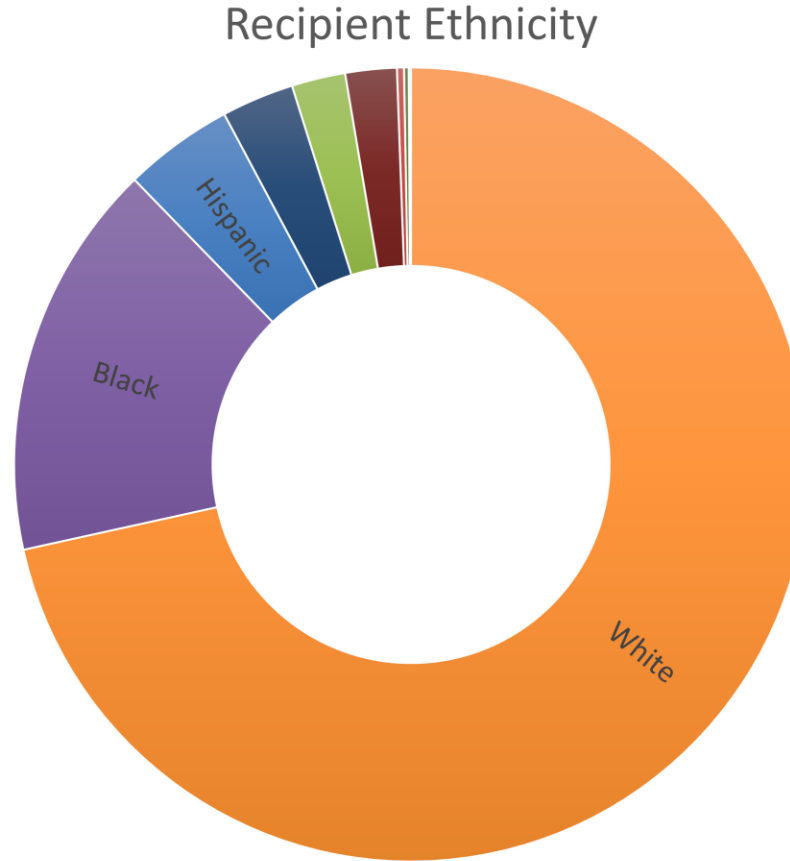
**Fall 2022 data is provisional and will not be finalized until Fall 2023.*

Data

LIFE Scholarship Recipients 2008-2022: Race/Ethnicity and Gender

Fall Term Only Demographics:

Hispanic/Latino: 24,332 = 4.7%
American Indian/Alaskan Native: 1,721 = 0.3%
Asian: 11,808 = 2.3%
Black/African American: 88,819 = 17%
Native Hawaiian/Pacific Islander: 520 = .10%
White: 392,493 = 75.2%
2 or More Races: 16,420 = 3.1%
Unknown: 11,722 = 2.2%
Not Reported: 1,009 = .20%
Total Fall Recipients: 521,939



Gender:

Male: 213,025 = 40.8%
Female: 334,810 = 64.1%
Not Reported: 1,009 = .2%

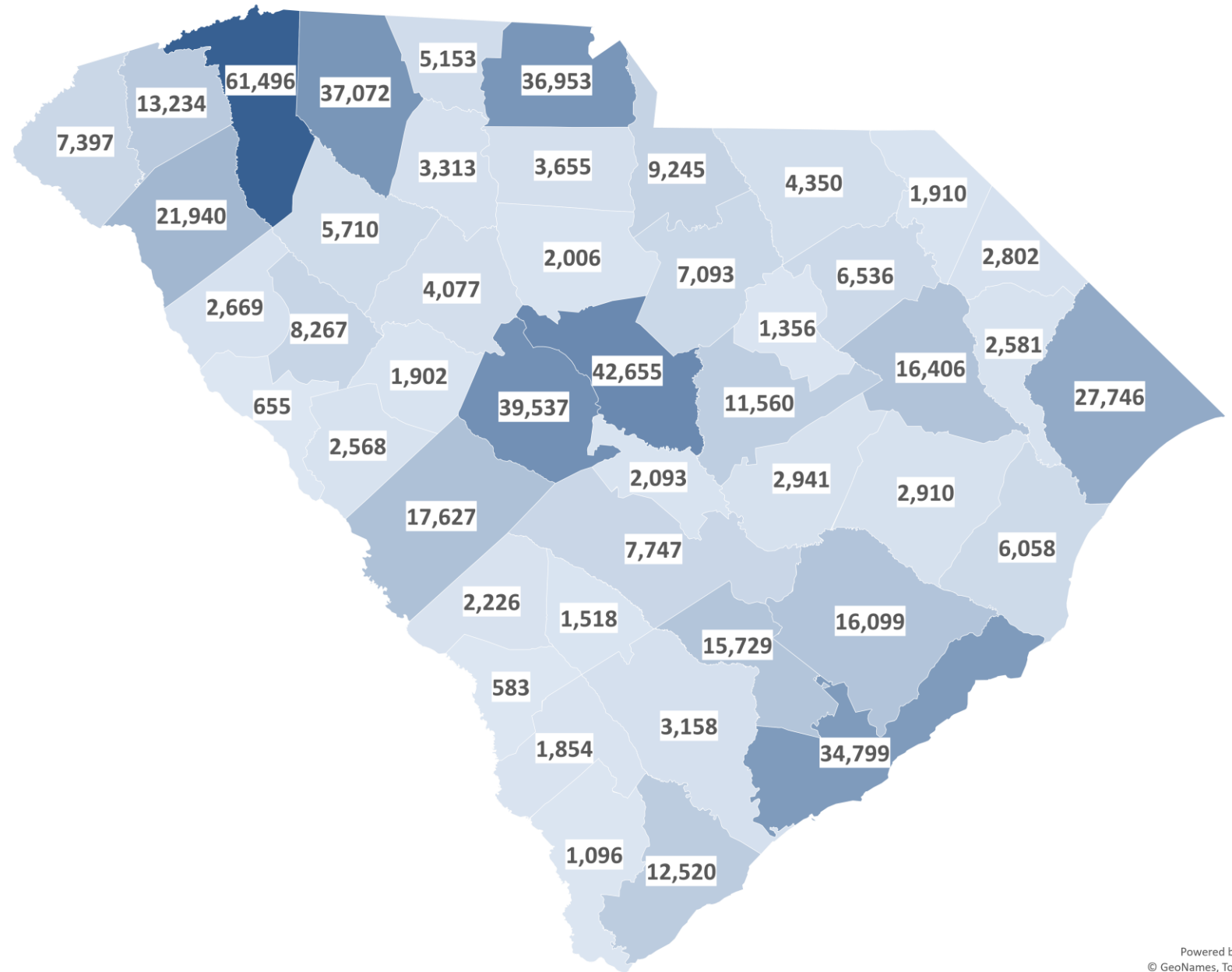
LIFE Recipients Fall 2008- Fall 2022 County Information

Fall Term Only County Data

Total Fall Recipients: 51,158

* Not included on map:

- 2,725 Out-of-state
- 24,453 Unknown



SC HOPE Scholarship

(Statutory Authority: 59-150-370)

2021-22: 4,603 Students

History

- Established in 2002: Merit-based award for first-time entering freshmen attending four-year institutions who do not meet the qualifications for Palmetto Fellows or LIFE Scholarship
- Award amount: \$2,800

Eligibility Criteria

- Be a SC resident
- Enrolled in a minimum of twelve credit hours for the term at an eligible four-year institution
- Earn at least a 3.0 final high school GPA
- Not a recipient of LIFE or Palmetto Fellows Scholarship in the same academic year

Eligibility Criteria from SC HOPE to LIFE

- No application is required for the SC HOPE Scholarship- it is automatically awarded by the college or university's financial aid office
- SC HOPE Scholarship awarded for up to two terms within the first academic year of college
- SC HOPE recipients can earn the LIFE Scholarship in their second year if they earn at least a 3.0 LIFE GPA (on a 4.0 scale for graduation purposes) and at least 30 credit hours by the end of the first academic year in college

SC HOPE

- SC HOPE Scholarship is protected by state funds (after Lottery)
- All eligible students are awarded if there is room in their financial aid package
- For 2021-22, CHE awarded \$11,406,073 in SC HOPE Scholarship funding to 4,603 recipients

Data

SC HOPE Recipients: 2007-2022

	SC HOPE Scholarship Recipients	(Continued)	SC HOPE Scholarship Recipients
Fall 2008	2,590	Fall 2015	3,513
Fall 2009	2,715	Fall 2016	3,795
Fall 2010	2,848	Fall 2017	3,477
Fall 2011	2,859	Fall 2018	3,795
Fall 2012	2,926	Fall 2019	3,543
Fall 2013	3,189	Fall 2020	3,906
Fall 2014	3,309	Fall 2021	4,279
		Fall 2022	4,266

Note: Fall data reported by all institutions in the fall term

**Fall 2022 data is provisional and will not be finalized until Fall 2023.*

Data

2005-2022

Rate of SC HOPE Scholarship Recipients' who move from SC HOPE to LIFE from Year 1 to Year 2: **27.5%**

Average rate of SC HOPE Scholarship recipients who remain in college for Year 2, with or without the LIFE Scholarship: **78.4%**

	Rate of SC HOPE who move to LIFE from Year 1 to Year 2	Rate of SC HOPE who Remain in College with or without scholarship from Year 1 to Year 2
Fall 2007	21.7%	86.8%
Fall 2008	22.7%	85.9%
Fall 2009	22.6%	87.3%
Fall 2010	21.9%	85.8%
Fall 2011	22.7%	85.0%
Fall 2012	23.7%	84.7%
Fall 2013	24.4%	84.7%
Fall 2014	24.6%	85.3%

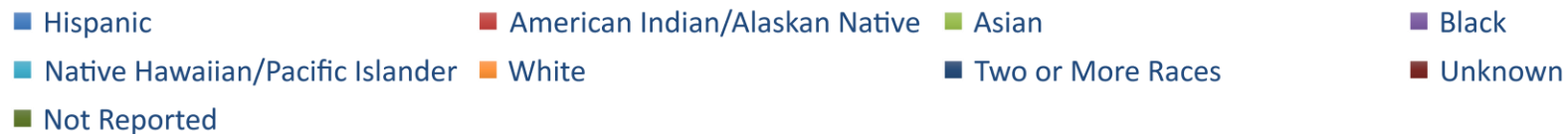
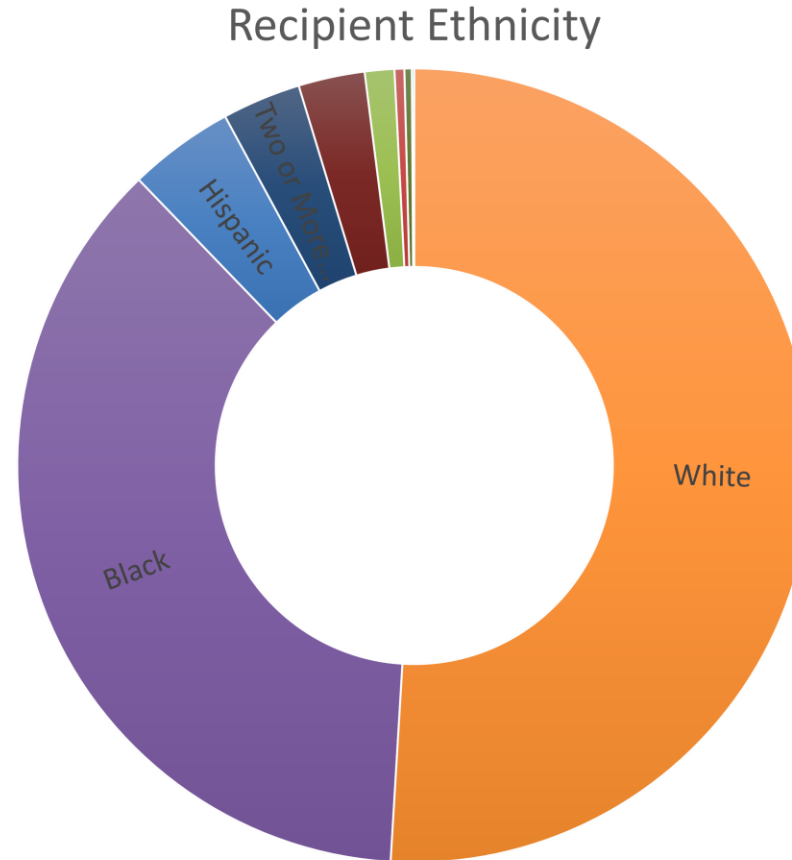
	Rate of SC HOPE who move to LIFE from Year 1 to Year 2	Rate of SC HOPE who Remain in College with or without scholarship from Year 1 to Year 2
Fall 2015	25.3%	85.0%
Fall 2016	27.2%	78.1%
Fall 2017	27.0%	78.4%
Fall 2018	26.7%	80.1%
Fall 2019	25.3%	80.3%
Fall 2020	31.6%	78.4%
Fall 2021	27.3%	75.1%
Average Retention Rate from Year 1 to Year 2	24.9%	82.7%

Data

SC HOPE Scholarship Recipients 2008-2022: Race/Ethnicity and Gender

Fall Term Only Demographics:

Hispanic/Latino: 2,214 = 4.3%
American Indian/Alaskan Native: 218 = .4%
Asian: 631 = 1.2%
Black/African American: 18,810 = 36.8%
Native Hawaiian/Pacific Islander: 53 = .1%
White: 26,051 = 50.9%
2 or More Races: 1,634 = 3.2%
Unknown: 1,396 = 3.2%
Not Reported: 154 = .3%
Total Fall Recipients: 51,161



Gender:

Male: 20,641 = 40.3%
Female: 30,356 = 59.3%
Not Reported: 154 = .3%

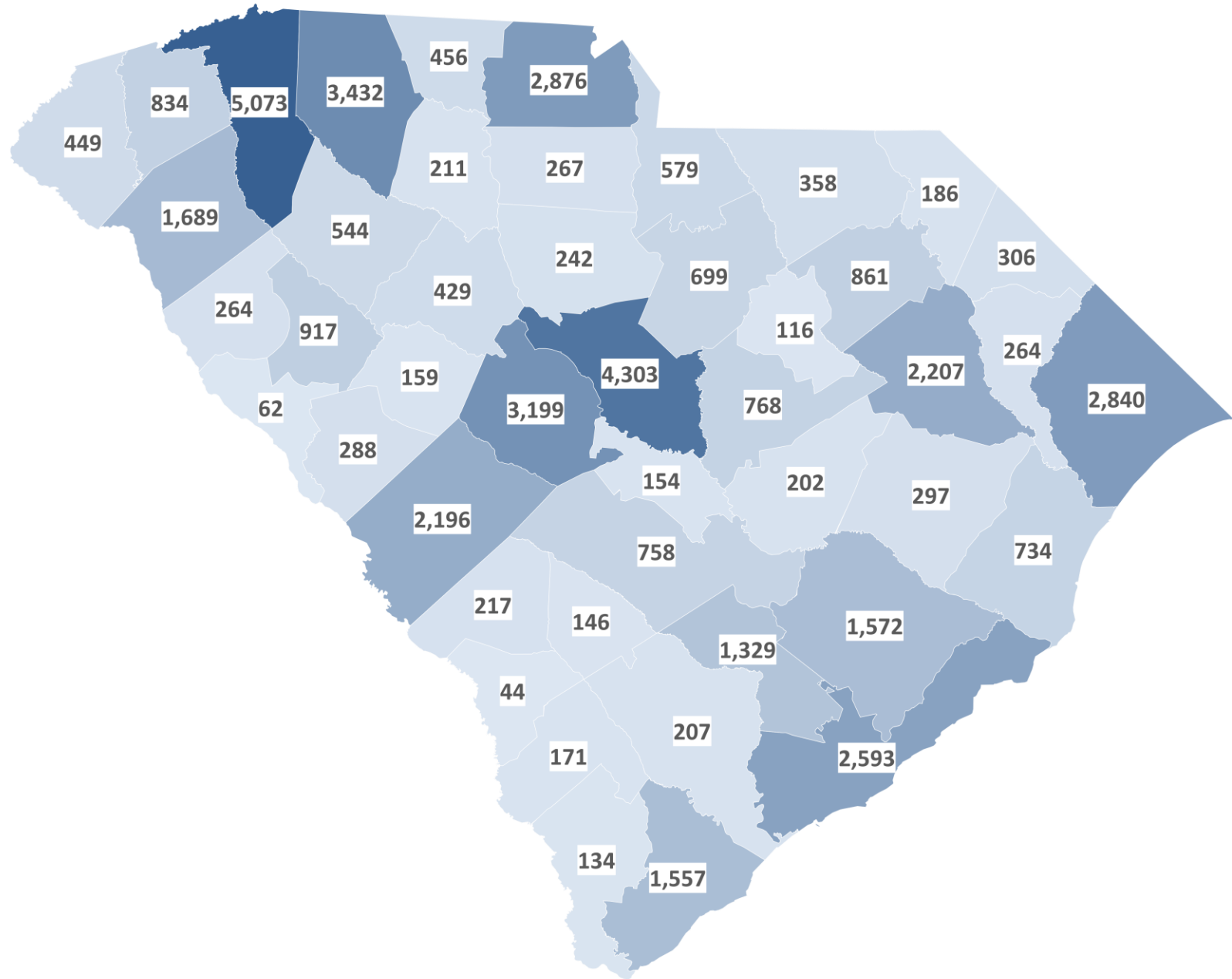
SC HOPE Recipients Fall 2008- Fall 2022 County Information

Fall Term Only County Data

Total Fall Recipients: 51,158

* Not included on map:

- 258 Out-of-state
- 3,640 Unknown



Public High School Graduates and State Scholarship Recipients

- Spring 2020 – 48,546** high school seniors graduated from public high schools in the state of South Carolina
- Fall 2020 State Scholarship Recipients*
 - SC HOPE: 3,860 first time recipients – 8%
 - LIFE: 14,328 first time recipients – 30%
 - Palmetto Fellows: 1,631 first time recipients – 3%
 - Approximately 41% of public high school graduates in SC receive a state scholarship or grant upon entering college in the Fall

Additional Data Considerations:

- Data does not include students who graduated from private/independent high schools or home schools
- Data does not include students who elected to go out of state
- Data does not include students who were early graduates or mid-year enrollees

*Data from 2022 Statistical Abstract

**Data from SC Department of Education School Report Card

Lottery Tuition Assistance

(Statutory Authority: 59-150-360)

2021-22: 42,263 Students

History: Lottery Tuition Assistance Program (LTAP)

- 2001: SC Education Lottery Act
- Tuition assistance to South Carolina residents attending two-year public or independent institutions
- Supports traditional, non-traditional, workforce re-toolers, dual enrollment students

LTAP Criteria: Initial and Continuing

- Initial:
 - File the Free Application for Federal Student Aid (FAFSA) or FAFSA waiver
 - SC resident
 - Enrolled as a part-time or full-time student at a two-year institution
- Continuing:
 - Maintain a minimum 2.0 GPA (on a 4.0 scale) after attempting 24 credit hours

Award Process

- Dollar amount of the grant depends on the number of South Carolina students eligible to receive LTA and the amount of available funding from SC Lottery funds
- LTA Program is not protected by general funds. If lottery revenue received is less than funds appropriated, LTA awards are reduced (SECTION 59-150-355 of the SC Education Lottery Act)

DATA

<u>Term</u>	<u>Amount Per Credit Hour</u>
Fall 2002	\$66
Spring 2003	\$87
Summer 2003	\$73
Fall 2003	\$73
Spring 2004	\$73
Summer 2004	\$73
Fall 2004	\$77
Spring 2005	\$77
Summer 2005	\$62
Fall 2005	\$78
Spring 2006	\$78
Summer 2006	\$78
Fall 2006	\$83
Spring 2007	\$83
Summer 2007	\$79
Fall 2007	\$72
Spring 2008	\$76
Summer 2008	\$70
Fall 2008	\$75
Spring 2009	\$75
Summer 2009	\$70

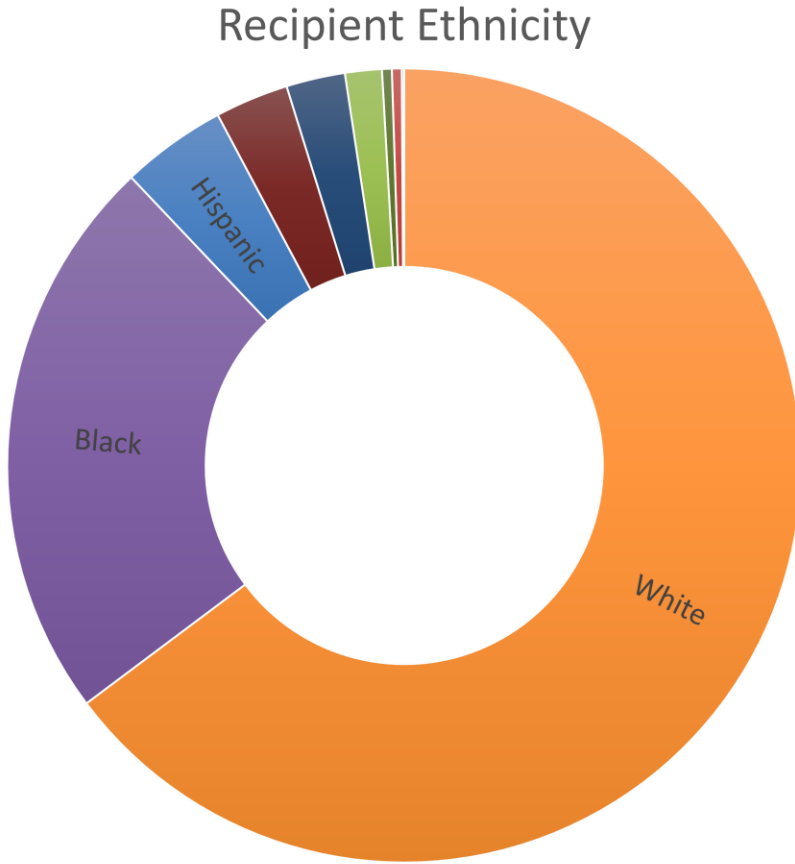
<u>Term</u>	<u>Amount Per Credit Hour</u>
Fall 2009	\$75
Spring 2010	\$75
Summer 2010	\$75
Fall 2010	\$78
Spring 2011	\$78
Summer 2011	\$78
Fall 2011	\$78
Spring 2012	\$78
Summer 2012	\$78
Fall 2013	\$78
Spring 2013	\$78
Summer 2013	\$78
Fall 2014	\$95
Spring 2014	\$95
Summer 2014	\$95
Fall 2015	\$95
Spring 2015	\$95
Summer 2015	\$95
Fall 2015	\$95
Spring 2016	\$95
Summer 2016	\$95

<u>Term</u>	<u>Amount Per Credit Hour</u>
Fall 2016	\$95
Spring 2017	\$95
Summer 2017	\$95
Fall 2017	\$95
Spring 2018	\$95
Summer 2018	\$95
Fall 2018	\$95
Spring 2019	\$95
Summer 2019	\$95
Fall 2019	\$100
Spring 2020	\$110
Summer 2020	\$110
Fall 2020	\$110
Spring 2021	\$110
Summer 2021	\$110
Fall 2021	\$85
Spring 2022	\$85
Summer 2022	\$85
Fall 2022	\$85
Spring 2023	\$85
Summer 2023	\$85
Fall 2023	\$80

Data

LTAP Recipients 2008-2022: Race/Ethnicity and Gender

Fall Term Only Demographics:
Hispanic/Latino: 18,851= 4.3%
American Indian/Alaskan Native: 1,899 = .4%
Asian: 6,582 = 1.5%
Black/African American: 101,714= 23.2%
Native Hawaiian/Pacific Islander: 524 = .1%
White: 283,628 = 64.9%
2 or More Races: 10,345 = 2.4%
Unknown: 13,345 = 3%
Not Reported: 1,571 = .4%
Total Fall Recipients: 438,459



Gender:
Male: 176,030 = 40.1%
Female: 260,858 = 59.5%
Not Reported: 1,571 = .4%

- Hispanic
- American Indian/Alaskan Native
- Asian
- Black
- Native Hawaiian/Pacific Islander
- White
- Two or More Races
- Unknown
- Not Reported

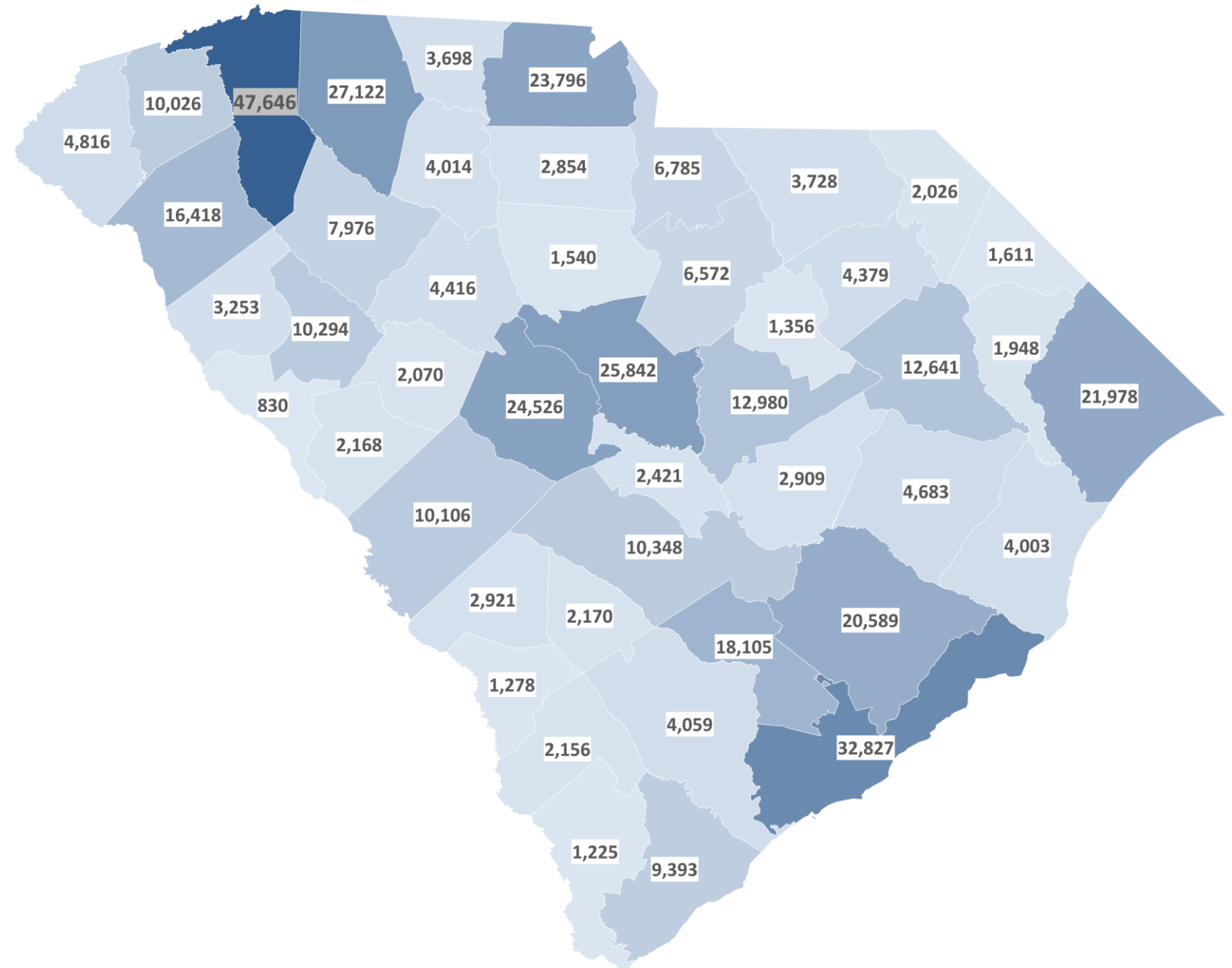
LTAP Recipients Fall 2008- Fall 2022 County Information

Fall Term Only County Data

Total Fall Recipients: 438,459

* Not included on map:

- 4,772 Out-of-state
- 4,419 Unknown



Lottery Tuition Assistance Dual Enrollment

- 11,547 students in dual enrollment received Lottery Tuition Assistance (LTA)
- 12.1 million LTA awarded for dual enrollment
- \$1,052 average LTA amount per student

Data from SC Technical College System website. Does not include two-year USC Regionals or Spartanburg Methodist College

South Carolina National Guard College Assistance Program (SCNG CAP)

(Statutory Authority: 59-114-75)

South Carolina National Guard College Assistance Program (SCNG CAP)

- 2007: South Carolina National Guard College Assistance Program (SCNG CAP)
- Offers financial assistance to Air and Army Guard servicemembers
- Incentive for enlisting or remaining for a specified time in the SC National Guard
- Administered by CHE in consultation with the SCNG and SC Higher Education Institutions (§ 59-114-75)

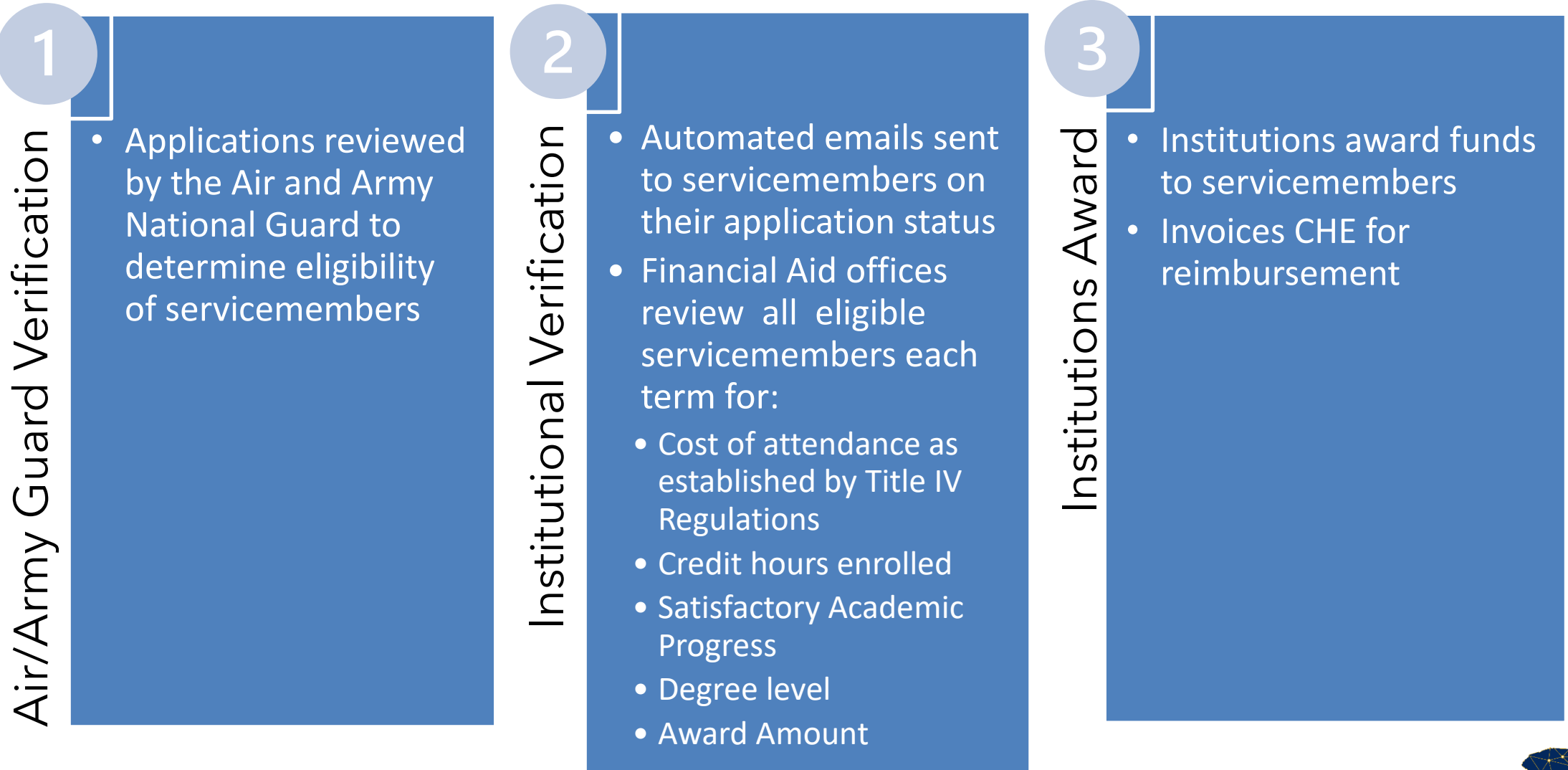
SCNG CAP Eligibility Criteria

- Complete the SCNG CAP electronic application within two application windows (June 1 – August 1 or November 20 – December 15)
- Be a U.S. Citizen or legal permanent resident
- Be in good standing with the active Air and Army National Guard throughout the entire academic year
- SC National Guard determines eligibility by reviewing records for:
 - Advance Individual Training (AIT) and Basic Combat Training (BCT) Completion
 - Flagging Action
 - AWOL (Absence without leave)
 - Degree Level

Continued Eligibility Criteria

- Maintain Satisfactory Academic Progress (SAP)
- Admitted, enrolled, and classified as a degree-seeking student at an eligible SC institution
- Have valid tuition and fee expenses from an eligible SC institution

SC National Guard CAP Award Process



South Carolina National Guard

College Assistance Timeframe and Award Amounts

Proviso 117.148 for FY 2022-2023 Appropriations - Full-time servicemembers at eligible SC Institutions may receive:

Air National Guard	
2-year Institutions/Programs	
Lifetime Max	\$ 22,000
Max per Academic Year (AY)	\$11,000 per year \$5,500 per term

Army National Guard	
2-year <u>AND</u> 4-year Institutions/Programs	
Lifetime Max	\$ 22,000
Max per Academic Year (AY)	\$5,500 per year \$2,750 per term

OR

4-year Institutions/Programs	
Lifetime Max	\$ 22,000
Max per Academic Year (AY)	\$5,500 per year \$2,750 per term

1. Per academic year (fall, spring, and summer)
2. Lifetime maximum cannot exceed \$ 22,000
3. Grant is subject to the availability of funds

Scholarship and Grants Appropriations

South Carolina National Guard College Assistance Program	
Fiscal Years	Lottery Appropriations
2016-2017	\$4,545,000
2017-2018	\$4,634,968
2018-2019	\$2,631,129
2019-202	\$2,631,129
2020-2021	\$2,631,129
2021-2022	\$2,631,129
2022-2023*	\$6,200,000

**Data from 2022 Statistical Abstract*

Data

SCNG CAP Total Disbursements and Recipients by Academic Year: 2008-2009 through 2021-2022

Academic Year	Recipients	Total Award Amounts
2008-2009	978	\$3,338,709
2009-2010	1,206	\$4,129,600
2010-2011	1205	\$4,166,340
2011-2012	1313	\$4,443,482
2012-2013 ¹	890	\$1,965,343
2013-2014	754	\$2,816,592
2014-2015	769	\$3,020,520

Academic Year	Recipients	Total Award Amounts
2015-2016	863	\$3,266,100
2016-2017	717	\$2,606,523
2017-2018	638	\$2,239,698
2018-2019	616	\$2,181,870
2019-2020	575	\$2,082,241
2020-2021	651	\$2,363,229
2021-2022*	749	\$2,936,568

¹No SC National Guard scholarships were reported in Spring 2013.

*As of 5/1/2023, 2021-2022 Data is Provisional

*Data from 2021 and 2022 Statistical Abstract

Data

SCNG CAP
Unduplicated
Headcount¹
Recipients
Academic Years
2008 -2009
through
2021-2022

SCNG CAP Unduplicated Headcount ¹ of Recipients							
Academic Years	Institutions						
	Research Institutions	Comprehensive Teaching Institutions	USC Two-Year Regional Campuses	Technical Colleges	Independent Senior Colleges	Independent Two-Year Colleges	Total
2008-2009	102	268	21	368	216	3	978
2009- 2010	115	317	14	466	292	2	1,206
2010-2011	113	297	17	466	310	2	1205
2011-2012	99	291	16	53	377	0	1313
2012-2013 ²	89	258	12	290	241	0	890
2013-2014	91	249	11	234	169	0	754
2014-2015	92	255	16	254	150	2	769
2015-2016	109	300	14	292	146	2	863
2016-2017	97	232	6	259	122	1	717
2017-2018	91	206	9	207	121	4	638
2018-2019	79	208	9	212	105	3	616
2019-2020	81	199	12	165	117	1	575
2020-2021	123	248	12	160	106	2	651
*2021-2022	187	291	11	155	103	2	749
Total by Sector	1,468	3,619	180	4058	2575	17	

Grand total of Unduplicated Headcount of Recipients 2008-2022

11,924

¹ Headcounts are unduplicated at the institution level. Students who transfer between institutions during the academic year will be counted more than once in the Grand Total.

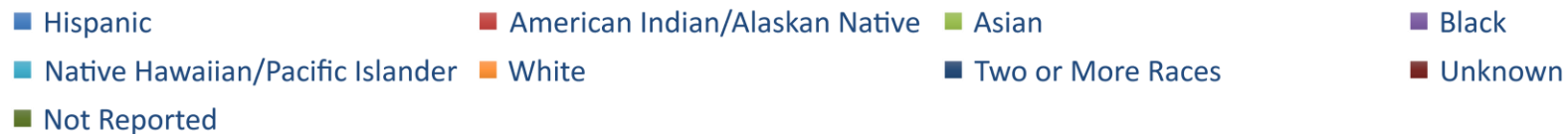
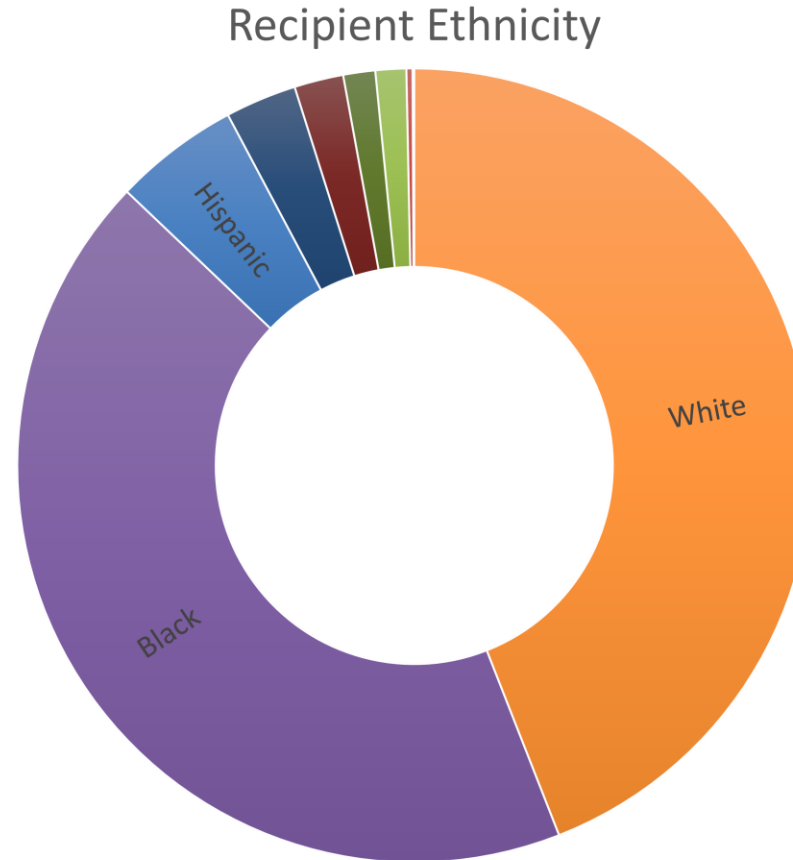
² No SC National Guard scholarships were reported in Spring 2013. *As of 5/1/2023, Fall 2022 data is incomplete and will not be finalized until Fall 2023.

Data

SCNG CAP Scholarship Recipients 2008-2022: Race/Ethnicity and Gender

Fall Term Only Demographics:

Hispanic/Latino: 537 = 5.1%
American Indian/Alaskan Native: 26 = .25%
Asian: 131 = 1.25%
Black/African American: 4475 = 43%
Native Hawaiian/Pacific Islander: 7 = 0.07%
White: 4675 = 44%
2 or More Races: 308 = 2.9%
Unknown: 210 = 2.0%
Not Reported: 142 = 1.3%
Total Fall Recipients: 10,511



Gender:

Male: 7,092 = 67.3%
Female: 3,067 = 58.4%
Not Reported: 352 = 3.34%

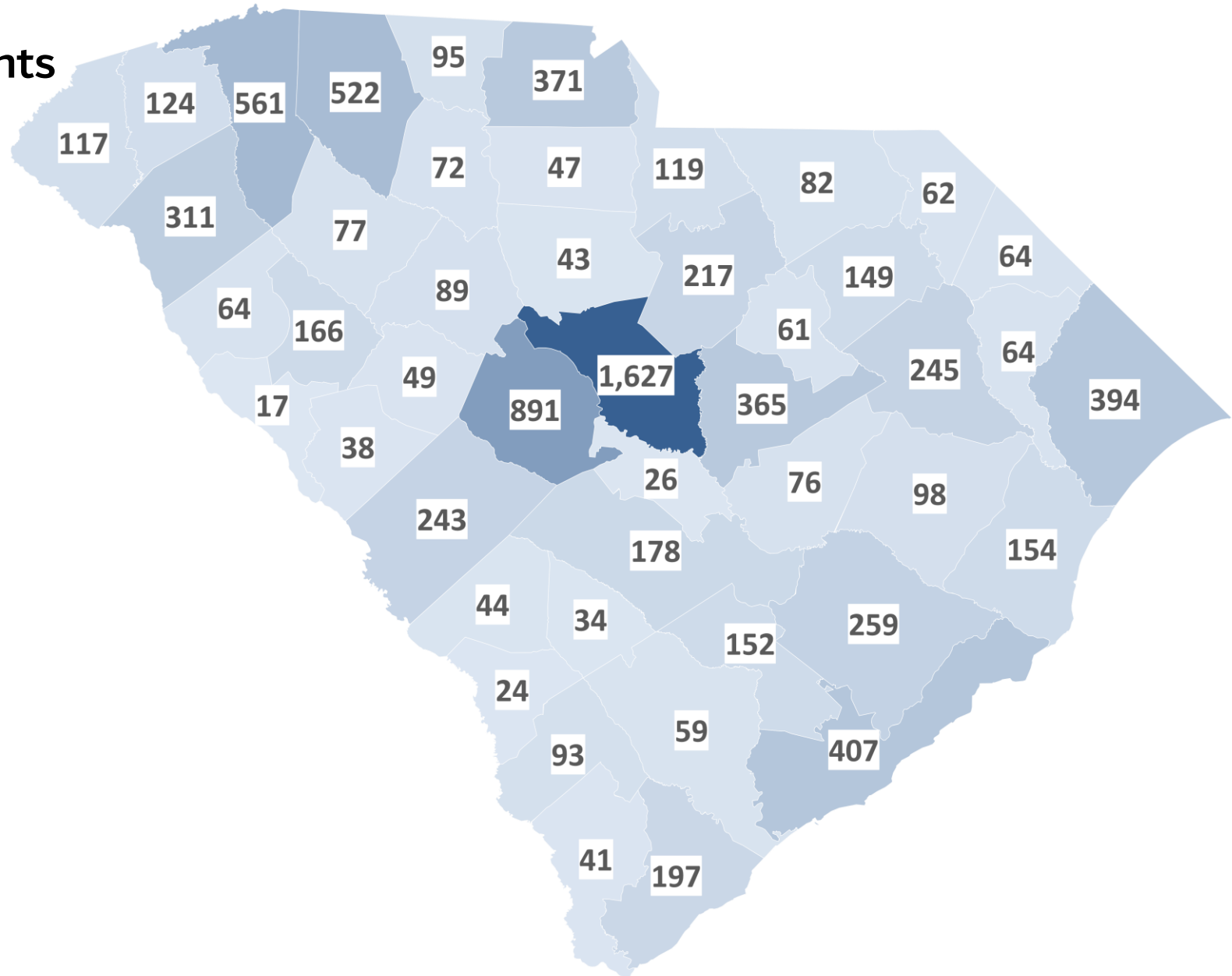
National Guard CAP Recipients Fall 2008- Fall 2022 County Information

Fall Term Only County Data

Total Fall Recipients: 10,509

* Not included on map:

- 759 out-of-state
- 547 unknown



Veterans Outreach: Military Credit Mobility for SC Servicemembers

Create data integration system statewide using an online portal

- November 2022 – January 2023
 - Initial meetings: American Council on Education, Dept of Veterans Services, institutions, other states
- February – March: SC Military Credit Mobility Taskforce
 - Convened task force with SC Dept of Veterans' Services
 - Institutions identify current policies/procedures for the transfer of military credits or MOUs regarding Military Occupation Specialties (MOS) or Air Force Specialty Codes (AFSC)
- April – September
 - Establish workgroups/Survey by June 2023 and disseminate survey results: academic credit for military experience/prior learning
 - Share information across institutional constituencies including policies/practices, such as crosswalks and articulations for service members
 - Outreach to servicemembers (campus support services, Veterans Success Centers, etc.)
Review policies/processes to establish a statewide initiative for military credit mobility

SC Need-based Grant

(Statutory Authority: 59-142-20)

2021-22: 37,811 Students

History

- 1996: SC Need-based Grant (NBG) established to provide additional financial assistance to South Carolina's neediest students who are attending an eligible SC public institution

Eligibility Criteria

- File the Free Application for Federal Student Aid (FAFSA)
- SC resident
- Enrolled 6 credit hours (part-time), or 12 credit hours (full-time)
- Complete any other documentation required by the Financial Aid Office at the institution at which the student is enrolled

Continued Eligibility Criteria

- Maintain a 2.0 GPA (on a 4.0 scale) and earn 24 credit hours, if full-time, or 12 credit hours, if part-time
- Complete FAFSA application annually, so in 'need' status can be confirmed

Award Process

- CHE communicates the institutions' Need-based Grant allocation for the year
- Eligible students may receive up to \$3,500, if full-time, or \$1,750, if part-time, each academic year; up to 3 disbursements
- Each institution determines awarding parameters
- Institutions award and then invoice CHE for reimbursement, each term

Data

SC Need-based Grant Recipients and Disbursements: 2008-2022

Academic Year	Need-based Grant Recipients	Disbursements
2007-2008	26,750	\$23,178,813
2008-2009	28,051	\$26,989,583
2009-2010	29,723	\$26,775,963
2010-2011	30,626	\$26,331,253
2011-2012	28,952	\$23,448,406
2012-2013	31,232	\$27,922,664
2013-2014	29,734	\$24,990,722

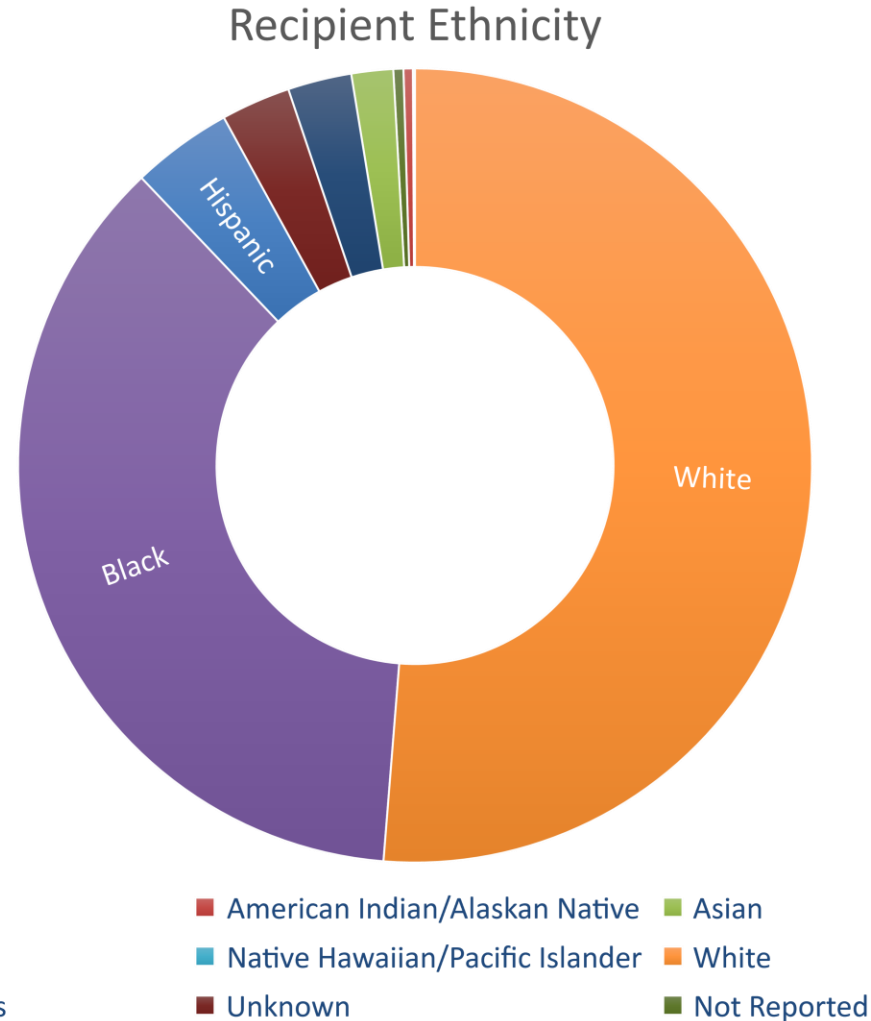
Academic Year	Need-based Grant Recipients	Disbursements
2014-2015	30,652	\$27,083,705
2015-2016	29,964	\$28,218,382
2016-2017	30,399	\$29,103,230
2017-2018	29,964	\$28,729,043
2018-2019	31,028	\$31,120,795
2019-2020	29,641	\$30,956,213
2020-2021	29,053	\$31,153,171
2021-2022	37,811	\$68,197,853

Data

SC Need-based Grant Recipients Fall Only 2008-2022: Race/Ethnicity and Gender

Fall Term Only Demographics:

Hispanic/Latino: 17,632 = 4%
American Indian/Alaskan Native: 1,630 = .41%
Asian: 7,077 = 1.7%
Black/African American: 157,303 = 36.65%
Native Hawaiian/Pacific Islander: 378 = .10%
White: 220,267 = 51.3%
2 or More Races: 11,141 = 2.6%
Unknown: 12,134 = 2.83%
Not Reported: 1,752 = .41%
Total Fall Recipients: 429,314



Gender:

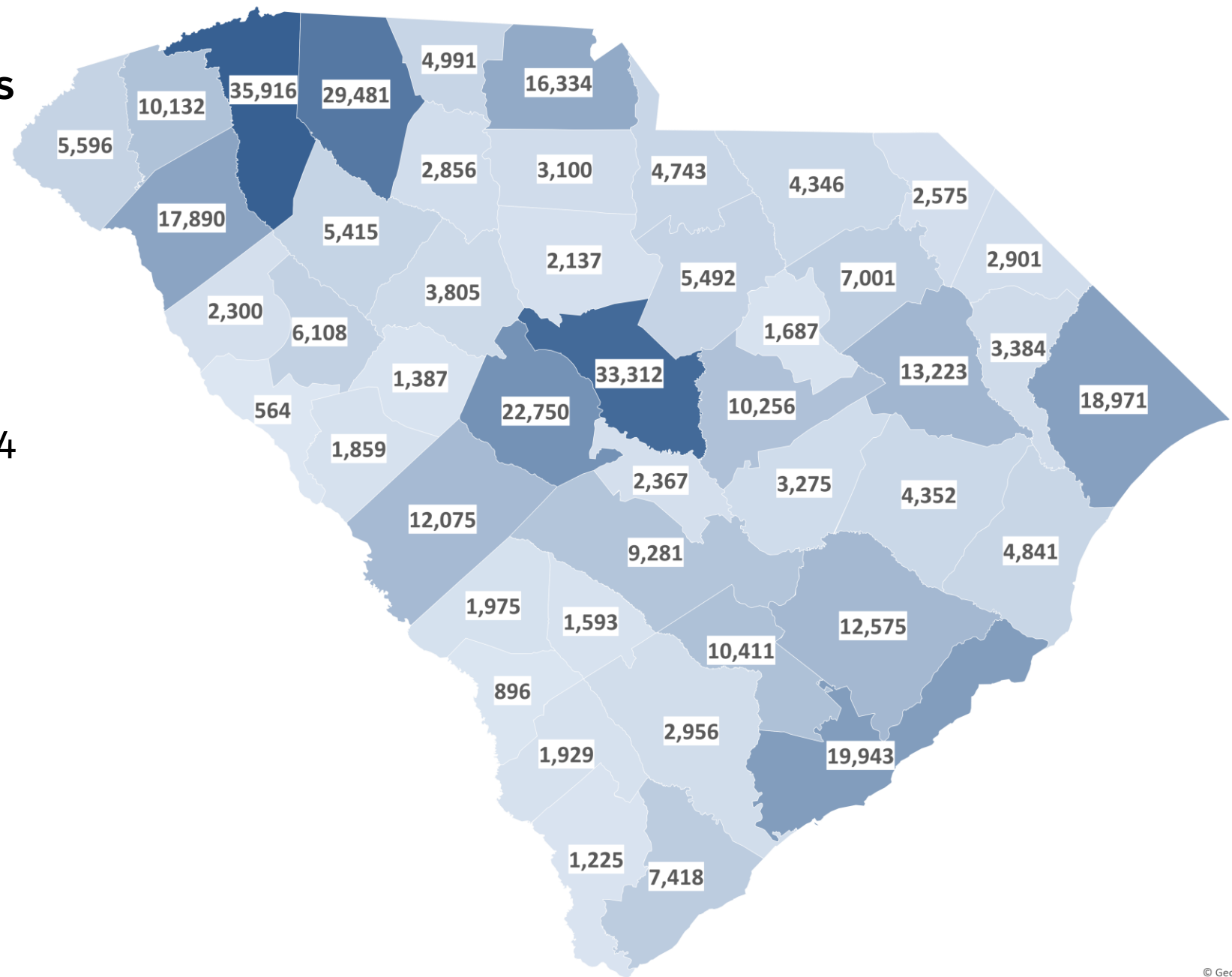
Male: 152,528 = 35.5%
Female: 275,034 = 64.1%
Not Reported: 1,752 = .4%

Need-based Recipients Fall 2008 - Fall 2022 County Information

Fall Term Only County Data

Total Fall Recipients: 429,314

- * Not included on map:
- 4,671 Out-of-state
- 46,057 Unknown



SC Need-based Grant: Foster Care Youth Funding

History

- Budget Proviso 11.8 provides up to \$100,000 in funding for Need-based Grants for Foster Care Youth
- Students in the custody of DSS or receiving foster services through DSS are eligible for additional Need-based Grant funding of up to \$2,000 above the \$3,500

Eligibility Criteria

- Meet SC Need-based Grant eligibility criteria; and
- Foster Care Youth:
 - Must submit Foster Care Youth waiver form and verification from Department of Social Services representative to CHE prior to May 1

Foster Care Need-Based Grant Award Process

1

CHE Verification

- CHE staff processes waiver form/DSS verification and then notifies the institution that the student is eligible for Need-based Foster Care funding

2

Institutional Verification

- Institution verifies requirements (citizenship, FAFSA, enrollment, etc.) and that all other grants have been awarded first, then the institution awards Need-based Foster Care funding

3

Institutions Award

- Institutions award funds and then invoices CHE for reimbursement

Data

SC Need-based Grant Foster Care Recipients and Disbursements: 2012-2022

Academic Year	Need-based Grant Foster Care Youth Recipients	Disbursements
2012-2013	3	\$8,750
2013-2014	5	\$9,000
2014-2015	9	\$11,000
2015-2016	5	\$5,000
2016-2017	2	\$3,000
2017-2018	10	\$13,750
2018-2019	13	\$21,000
2019-2020	16	\$18,750
2020-2021	27	\$36,048
2021-2022	16	\$26,625
*2022-2023	46	\$73,000
<i>*2022-2023 is Provisional data and will not be finalized until Fall 2023.</i>		

Data

SC Need-based Grant Foster Care Recipients and Disbursements: 2012-2022

Academic Year	Foster Care Recipients at Public Institutions	Foster Care Recipients at Private Institutions	Disbursements
2012-2013	3	0	\$8,750
2013-2014	4	1	\$9,000
2014-2015	7	2	\$11,000
2015-2016	5	0	\$5,000
2016-2017	1	1	\$3,000
2017-2018	9	1	\$13,750
2018-2019	11	2	\$21,000
2019-2020	13	3	\$18,750
2020-2021	24	3	\$36,048
2021-2022	16	0	\$26,625
*2022-2023	37	9	\$73,000
Total	130	22	\$225,923

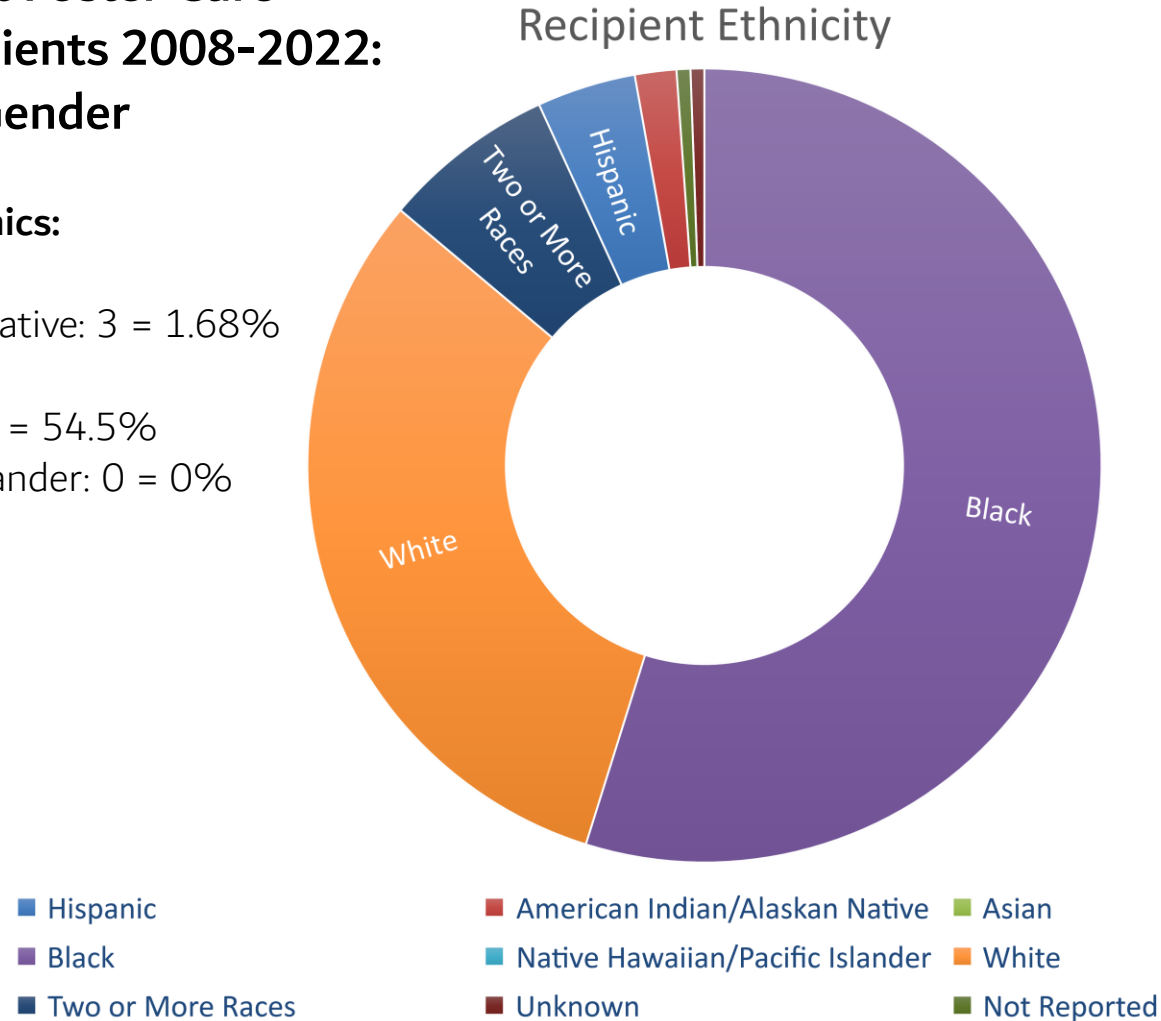
*2022-2023 is Provisional data and will not be finalized until Fall 2023.

Data

SC Need-based Grant Foster Care Youth Fall Only Recipients 2008-2022: Race/Ethnicity and Gender

Fall Term Only Demographics:

Hispanic/Latino: 8 = 4.4%
American Indian/Alaskan Native: 3 = 1.68%
Asian: 0 = 0%
Black/African American: 98 = 54.5%
Native Hawaiian/Pacific Islander: 0 = 0%
White: 56 = 31.1%
2 or More Races: 9 = 7.2%
Unknown: 1 = .56%
Not Reported: 1 = .56%
Total Fall Recipients: 180



Gender:

Male: 64 = 35.62%
Female: 115 = 63.82%
Not Reported: 1 = .56%

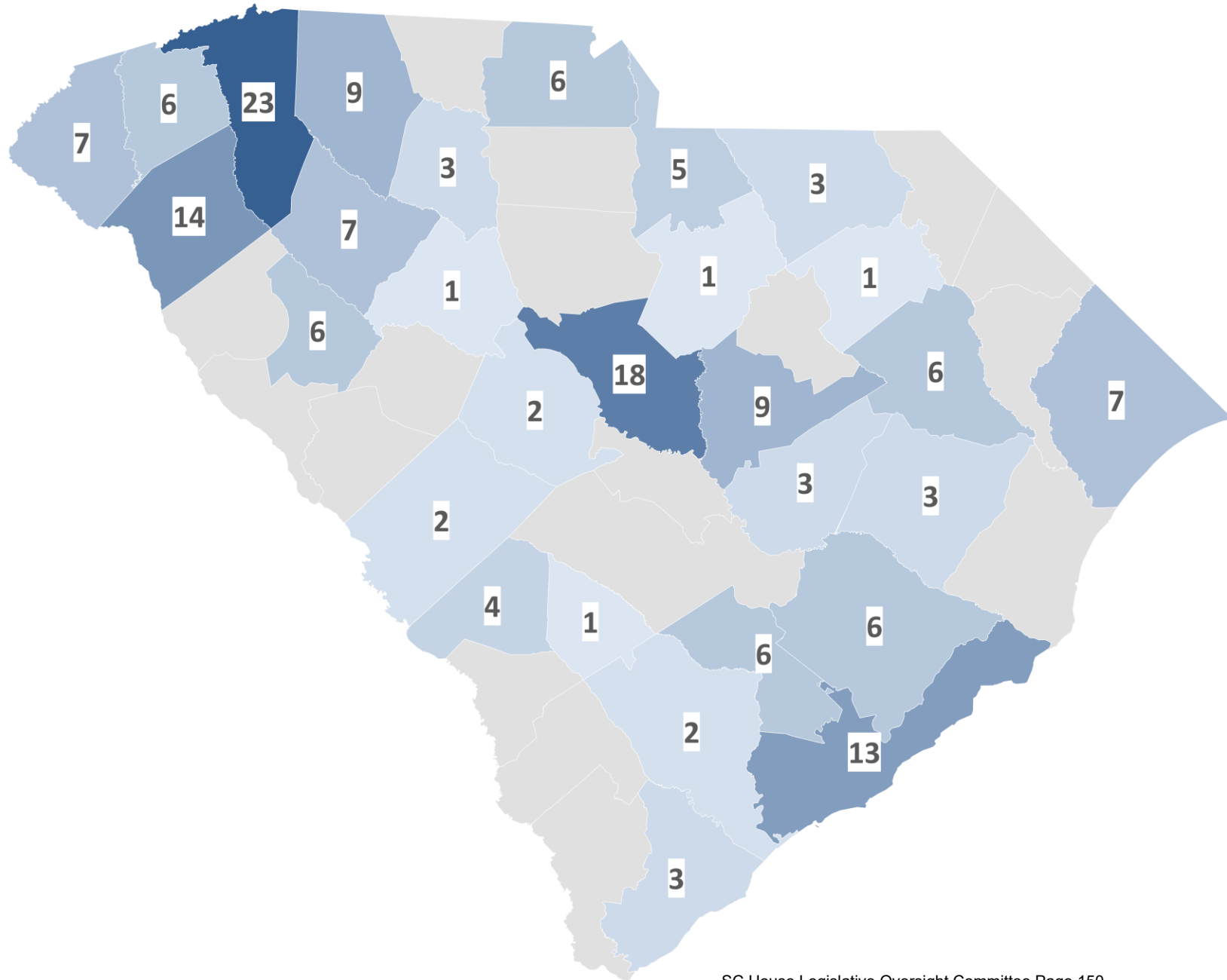
Foster Care Recipients Fall 2008 - Fall 2022 County Information

Fall Term Only County Data

Total Fall Recipients: 180

* Not included on map:

- 1 Out-of-state
- 2 Unknown



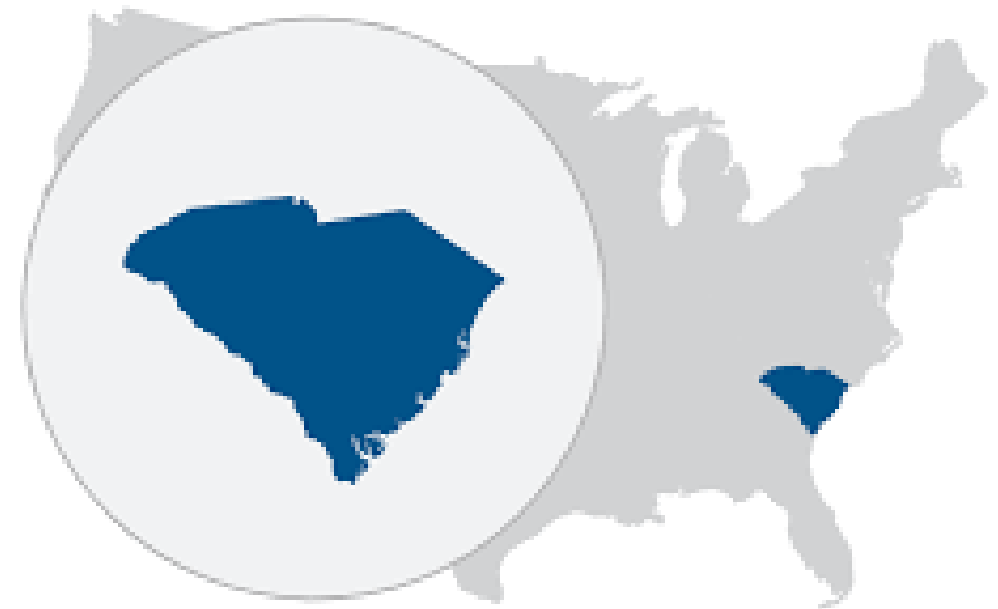
SC Need-based Grant: College Transition Program (Proviso 11.12)

Budget Proviso 11.12

- 2022-23: Budget Proviso 11.12 provides up to \$700,000 in Need-based Grant funding for intellectually challenged SC resident students enrolled in a College Transition Program

College Transition Programs

- Comprehensive transition and postsecondary programs for students with intellectual disabilities. Programing allows students to attend a SC institution and engage in academics, independent living environments, employment/career opportunities and socialization.
- As of April 1, 2023, the U.S. Department of Education has approved 165 programs throughout the nation.
- South Carolina has 6 approved CTP programs:
 - Clemson University
 - Coastal Carolina University
 - College of Charleston
 - University of South Carolina - Columbia
 - Winthrop University
 - University of South Carolina – Aiken as of *Fall 2023*



Eligibility Criteria

- File the Free Application for Federal Student Aid (FAFSA) and demonstrate 'need' using Title IV methodology each year
- Be a US citizen or a legal permanent resident and a legal resident of South Carolina
- Be enrolled at the time of grant disbursement in a College Transition Program

Award Process

- CHE staff collects estimated enrollment for the next fall term to determine the amount of the CTP Grant for the next academic year
- Institutions verify requirements (citizenship, residency, FAFSA, enrollment, etc.) and that all other grants and gift aid has been applied first
- Institutions award College Transition Program Grant and then invoices CHE for reimbursement.

Data

SC Need-based College Transition Program Grant Recipients and Disbursements: 2013-2022

Academic Year	Need-based CTP Grant Recipients	Disbursements
2013-2014	20	\$139,736
2014-2015	26	\$178,857
2015-2016	29	\$176,336
2016-2017	30	\$273,728
2017-2018	34	\$253,251
2018-2019	36	\$254,376
2019-2020	43	\$316,156
2020-2021	45	\$336,560
2021-2022	40	\$296,168
*2022-2023	35	\$285,210
<i>*2022-2023 is Provisional data and will not be finalized until Fall 2023.</i>		

CTP Outcomes

SC College Transition Programs: 2020-21 Program Retention Data

2020-21	Student Retention Data: Year 1 to Year 2	Student Retention Data: Year 2 to Year 3
Carolina LIFE	100%	83%
ClemsonLIFE	100%	100%
College of Charleston REACH	80%	80%
Coastal Carolina LIFE	64%	100%
Winthrop Think College*	84%	N/A
Total SC Programs	86%	91%

*Note: *Winthrop University is planning to start Year 3 programing for the 2022-23 academic year.*

CTP Outcomes

SC College Transition Programs: 2013-22 Program Graduation Data

Institution	Certification Awarded	CTP Graduates	
		2013-21	2021-22
Clemson University	Certificate of Completion	81	14
Coastal Carolina University	Certificate of Completion	38	4
College of Charleston	Certificate of Completion	42	11
University of South Carolina	Certificate of Completion	41	6
Winthrop University	Certificate of Completion	17*	5
Total CTP Graduates		219	40

*Note: *Winthrop University reported CTP graduates from 2019-2021.*

CTP Outcomes

SC College Transition Programs: 2021-22 Program Completion and Outcomes Data

2021-2022	Program Completion Rate	Independent Living Outcomes	Employment Rate
Carolina LIFE - USC	80%	25%	100%
ClemsonLIFE	96%	55%	100%
College of Charleston REACH	73%	78%	91%
Coastal Carolina LIFE	90%	16%	83%
Winthrop Think College	88%	41%	75%
Total SC Programs	85%	43%	90%

College Transition Program Scholarship (2022-23 Budget Proviso 3.5)

College Transition Scholarship Budget Proviso 3.5

- 2022-23: Budget Proviso 3.5 provided up to \$4,105,597 in funding for a College Transition Program Scholarship
- College Transition Program Scholarships are in the amount of at least \$2,500 per semester, not to exceed \$10,000 per academic year (including summer), for up to eight semesters in total

Eligibility Criteria

- Be a US citizen or a legal permanent resident and a legal resident of South Carolina
- Be enrolled at the time of grant disbursement in a College Transition Program

Award Process

- Institutions verify requirements (citizenship, residency, enrollment, etc.)
- College Transition Program Scholarship must be awarded prior to CTP need-based grant. Student cannot be over-awarded
- Institutions award the student College Transition Program funds and then invoice CHE for reimbursement

Data

SC College Transition Program Scholarship Recipients and Disbursements: 2021-2022

Institution	CTP Scholarship Disbursements				
	2021-22 Recipients	2021-22 Awards	2022-23 Recipients	*2022-23 Awards	Total Award Disbursement
Clemson University	12	\$60,000	14	\$140,000	\$200,000
Coastal Carolina University	20	\$97,500	20	\$195,000	\$292,500
College of Charleston	10	\$45,000	9	\$90,000	\$135,000
University of South Carolina	11	\$55,000	10	\$100,000	\$155,000
Winthrop University	8	\$37,500	6	\$50,000	\$87,500
Totals	61	\$295,000	59	\$575,000	\$870,000

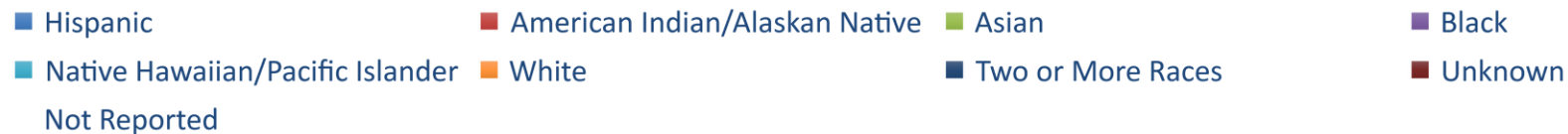
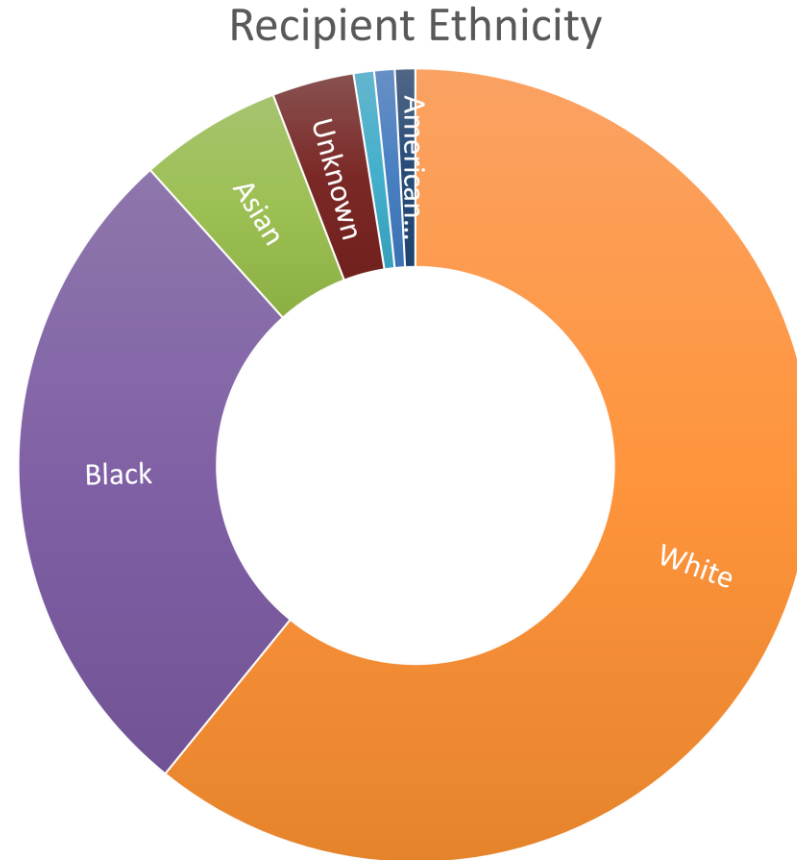
**2022-23 is provisional data and will not be finalized until Fall 2023.*

Data

College Transition Program Scholarship Recipients Fall Only 2021-2022: Race/Ethnicity and Gender

Demographics:

Hispanic/Latino: 1 = .84%
American Indian/Alaskan Native: 0 = 0%
Asian: 7 = 5.8%
Black/African American: 33 = 27.5%
Native Hawaiian/Pacific Islander: 1 = .84%
White: 73 = 60.84%
2 or More Races: 1 = .84%
Unknown: 4 = 3.34%
Not Reported: 0 = 0%
Total Fall Recipients: 120



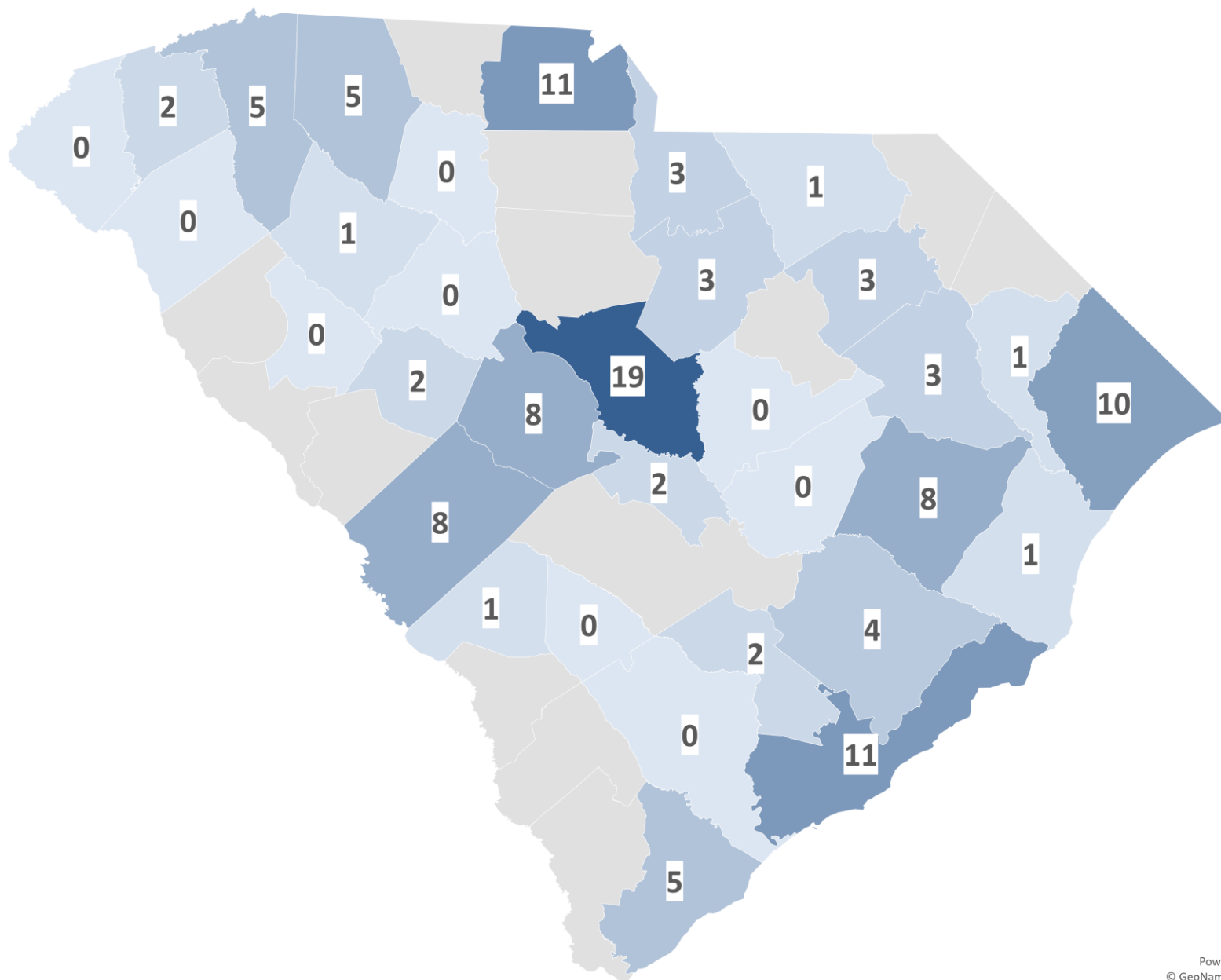
Gender:

Male: 70 = 58.3%
Female: 50 = 41.7%
Not Reported: 0 = 0%

CTP Scholarship Recipients Fall 2021 – Fall 2022 County Information

Fall Only County Data

Total Recipients: 120



Scholarship Appeals

(Statutory Authority: 59-149-10, 59-104-20, 59-150-370)

History

- LIFE, SC HOPE, and Palmetto Fellows Scholarship programs
- The Appeals Regulation (Statutory Authority: 1976 Code Section 59-149-10, 59-104-20, 59-150-370) defines the process, criteria, and circumstances in which a student may file an appeal
- Guidelines for appeal:

<https://che.sc.gov/student-scholarship-appeals>

Appeals Process for CHE Staff

- Expected that students who have missed any term(s) for any reason attend summer school to increase their GPA and attempt to make up ALL deficient credit hours
- Verify/validate supporting documentation to substantiate the extenuating circumstance

Appeals Process for CHE Staff

- Evaluation based on written/submitted information and documentation
- Staff reviews and may request additional documentation to support the appeal
- Academic performance prior to or after the documented extenuating circumstance may impact the outcome of an appeal
- Determine if the student used the institutional grievance procedure for having poor grades removed

Scholarship Appeals Process

Appeals Cycles

1

1. May – Appeals Cycle opens*
2. September – Deadline to submit Appeals application
3. December - Appeal Committee meets to review appeals that have requested reconsideration
- 4.*Ongoing review of documents and communication with students and families throughout May – December to ensure that all appeals information is submitted before the deadline.

2

Review of Appeals

- Decisions are made as each appeal file is completed until the final deadline
- Agency staff reviews each appeal according to Appeal Guidelines/Scholarship Regulations and notifies students about additional/incomplete documents
- Detailed letter of request for appeal that describes the extenuating circumstance(s).
- Supporting documentation
- Official academic transcript(s) from current and any previous institutions attended

3

Appeals Notifications

1. Agency staff notifies each student of the outcome in writing.
2. For those who are not granted, students are given five calendar days from receipt of letter to submit a written request for reconsideration with Appeals Committee.

Scholarship Appeals Committee

- One representative from the board of the Commission on Higher Education
- Three institutional representatives of which one is from a public senior college, one is from a private senior college, and one is from a two-year/technical college
- One representative from the General Assembly or legislative staff member
- One private or public high school guidance counselor representative
- One representative from the business community

Appeals

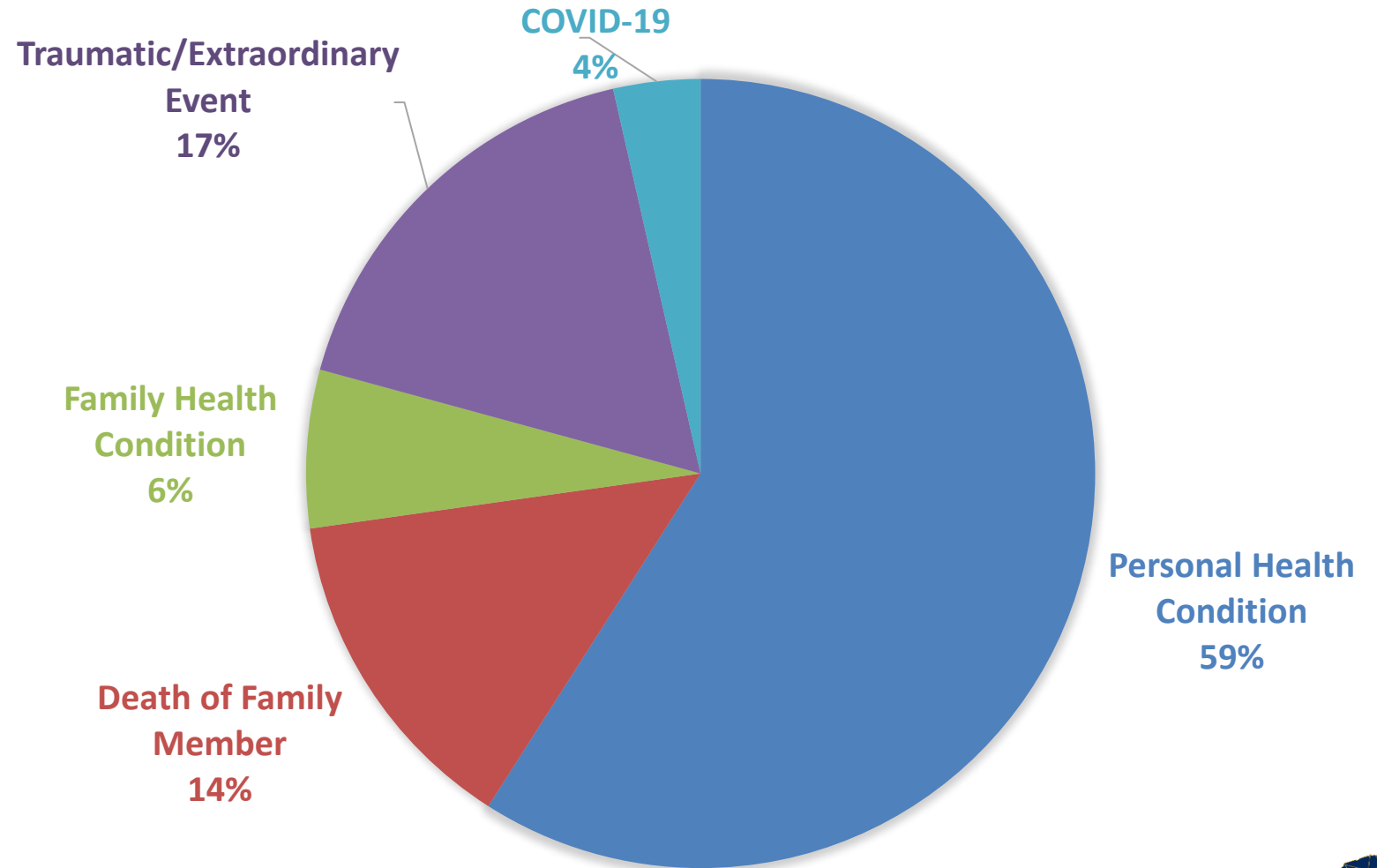
- Traumatic/Extraordinary Event
- Family Death/Health Conditions
- Student Health Conditions

Not Eligible to Appeal

- College adjustment issues
- Homesickness
- Problems with roommates
- Problems with the faculty or staff at the college or university
- Difficult course-load
- Misunderstanding of scholarship requirements/Misadvisement

Reason for Appeal

A total of **2,803**
appeals have
been received
since 2007



Appeal Statistics

- Total appeals received since 2007: 2,803
 - Total Granted: 46%
 - Total Denied: 49%
 - Sent to Appeal Committee: 14% (3% of decisions were reversed)
 - Referred back to institution: 4%
 - Ineligible to appeal: 1%

Collaboration with other Agencies/Entities:

- Public and Independent 2- and 4-year colleges and universities
- State Technical College System
- School Districts/Charter Schools/Home School Associations
- Dept of Social Services
- Vocational Rehabilitation
- Regional Education Centers (effective July 2023 - designated as Regional Workforce Advisors) – Dept of Employment Workforce
- SC Tuition Grants Commission
- SC Student Loan Corporation
- SC National Guard

College Access:

(College Goal South Carolina, College Application Events,
College and Career Decision Day)

Parent and Student Engagement

2022-23 – Student and parent engagement

- Financial aid events for students and parents: 24
- FAFSA completion events: 90
- Scholarship retention workshops for current recipients: 3

What is College Goal South Carolina?

- College Goal South Carolina started in 2006 as a pilot along the I-95 Corridor
- Program aims to increase the number of college-bound students who complete the Free Application for Federal Student Aid (FAFSA)
- High schools, higher education institutions and libraries host events throughout the months of October – March. Sites register with CHE during this time period.
- CHE works with financial aid staff at the local colleges and South Carolina Association for Financial Aid Administrators (SCASFAA) to come out to the site and help students complete FAFSAs

Why is FAFSA completion important for South Carolina?

- Data show that students who complete and submit a FAFSA are 84% more likely to enroll in post-secondary education
- 92% of seniors in the class of 2021 who completed the FAFSA enrolled after high school graduation vs. 51% who did not complete a FAFSA
- SC students from the class of 2021 missed out on **\$57million** in PELL Grants by not completing the FAFSA.

College Goal South Carolina Data - Since 2017-18

	2017-18	2018-19	2019-20	2020-21	2021-22	2022-23
Total # of College Goal Sites	38	91	89	32	59	89
Total # of Students and Families attending College Goal SC events	693	923	3,835	1,102	3,450	3,562
Total # of volunteers and college representatives at reporting schools	218	1,368	1,904	503	264	383
Number of statewide completed FAFSAs	28,812	47,230	33,287	32,100	35,302	25,266*
						*Estimate

College Application Events

Purpose:

Help high school seniors navigate the college admissions process and ensure that each participating student submits at least one admissions application.

College Application Month

The Office of Data
Management & IT



College Application Events Data - Since 2009

	2009	2016	2017	2018	2019	2020	2021*	2022*
Total # of participating schools	12	223	231	237	239	231	242	248*
Total # of high school seniors in reporting schools	1,000	48,298	47,746	47,406	46,428	36,380	44,363	47,422*
Total # of volunteers and college representatives at reporting schools	N/A	2,366	2,218	1,368	1,904	1,929	2,165	2,079
# of high school seniors who signed into a CAM event	N/A	22,052	22,617	24,129	24,678	11,756	19,903	21,340**
# of signed in high school seniors that completed the Student Survey	N/A	8,499	6,389	7,324	7,576	233	2,126	3,953
# of students who self-reported as “First in Family”	N/A	2,718	1,985	1,366	1,579	57	560	2,718
# of completed college applications as reported from Student Survey	N/A	14,513	11,837	14,336	15,045	465	3,870	6,825
Estimated # of overall completed college applications	N/A	37,656	41,902	47,230	49,007	23,462	36,272***	36,844***

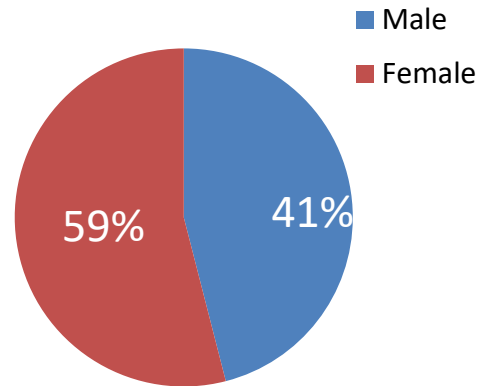


College Application Events Survey 2022

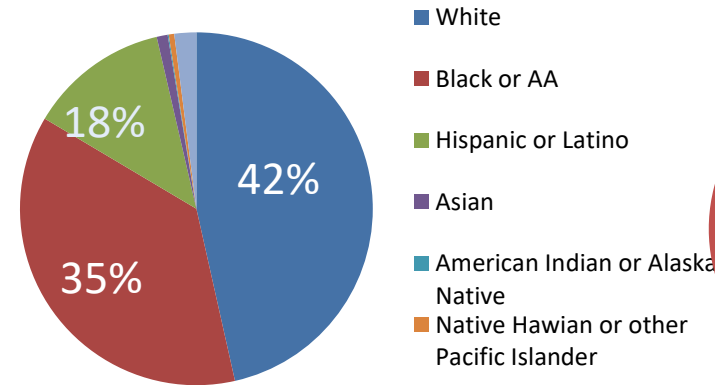
n=3,953

Data
& IT

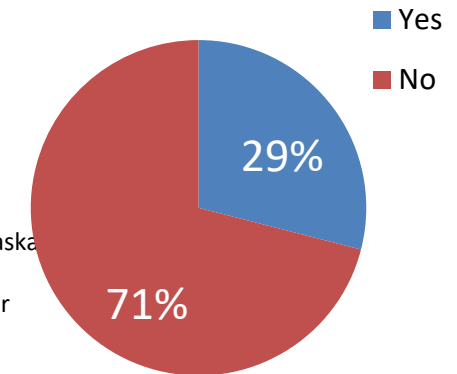
GENDER



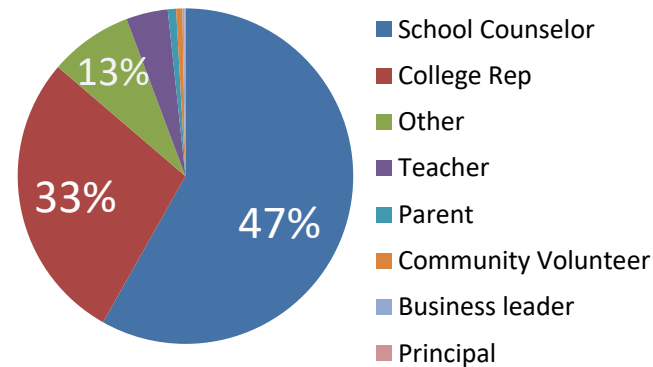
RACE/ETHNICITY



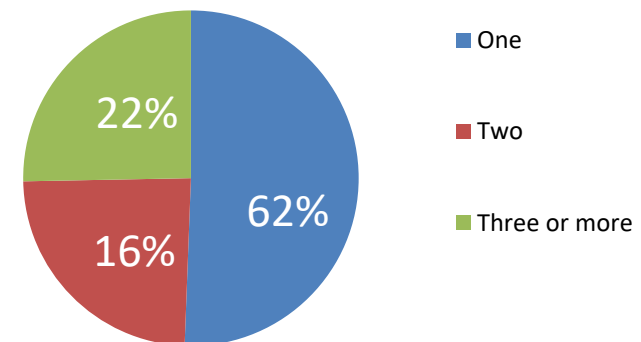
FIRST IN FAMILY



APPLICATION ASSISTANCE



COMPLETION OF APPLICATIONS PER STUDENT



In 2022, based upon student survey responses:

Top 10 most reported applications from student survey
(no particular order):

- Coastal Carolina University
- College of Charleston
- Winthrop University
- University of South Carolina/Columbia
- Francis Marion University
- Greenville Technical College
- University of South Carolina/Upstate
- Clemson University
- South Carolina State University
- Charleston Southern University

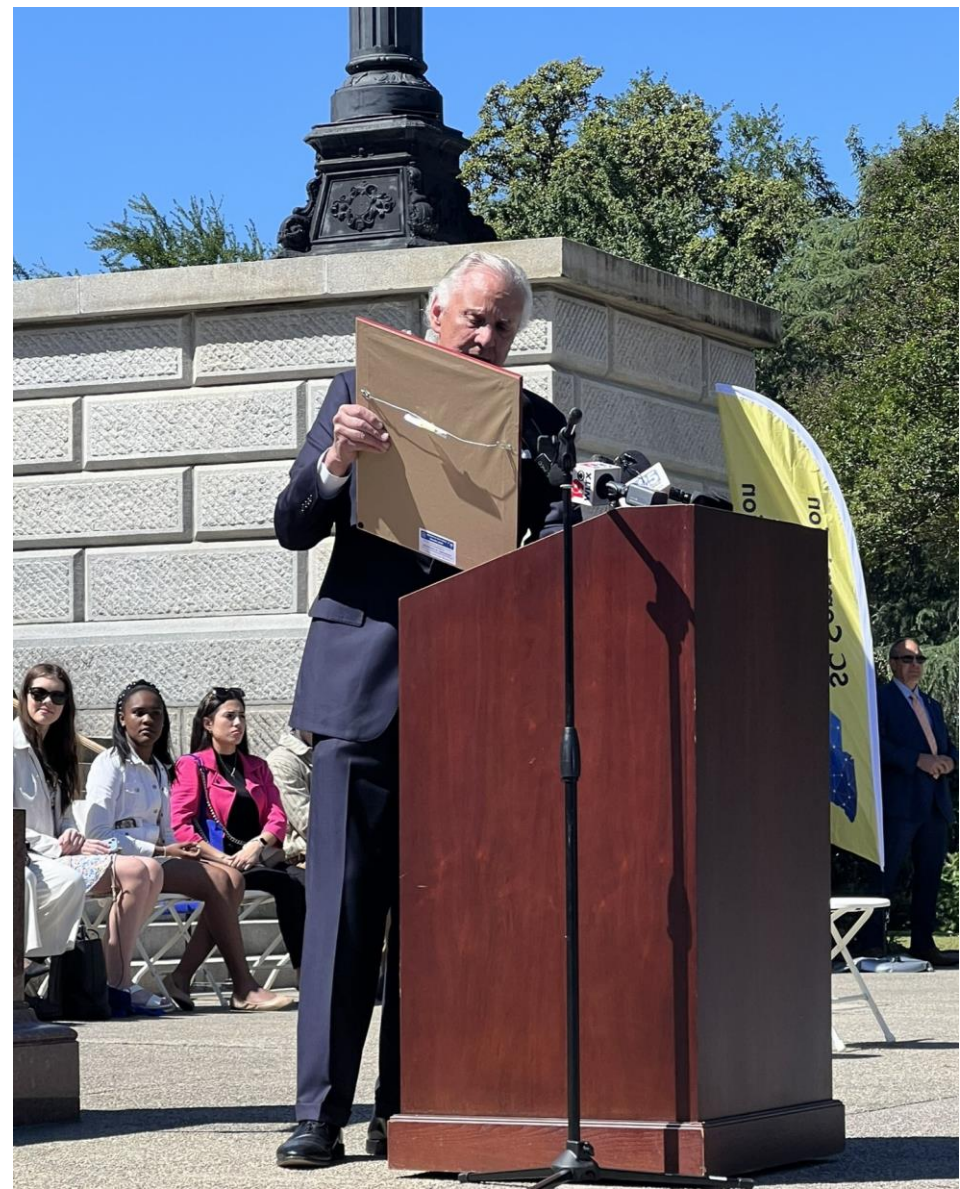
College and Career Decision Day

College and Career Decision Day South Carolina (2016-2023)

	2016	2017	2018	2019	2020	2021	2022	2023
Total # of Individual College & Career Decision Day Events	95	130	119	120	125	23	33	54

- Celebrates graduating high school seniors, and their decision to attend post-secondary education, military service or the workforce
- Separate from the individual events listed above, CHE hosted its first statewide College and Career Day Rally in 2022. The event attracted 1,100 high school seniors from 21 high schools across South Carolina.
- The second statewide event in 2023 attracted 1,600 high school seniors from 30 high schools

College and Career Decision Day 2023



Questions?